



Akt (Ab-473) Antibody

Cat. #: ANTY021054

Species: Human, Mouse and Rat

Quantity: 100ug

Concentration: 100ug/100ul

Storage and Stability:

Store at -20°C/1 year

Immunogen:

This antiserum was produced against synthesized non-phosphopeptide derived from human Akt around the phosphorylation site of serine 473 (Q-F-SP-Y-S).

Specificity:

Akt (Ab-473) Antibody detects endogenous levels of total Akt protein.

Tested Application: WB and IHC

Application Notes: Rabbit IgG in phosphate buffered saline (without Mg²⁺ and Ca²⁺), pH 7.4, 150mM NaCl, 0.02% sodium azide and 50% glycerol.

Raised In: Rabbit

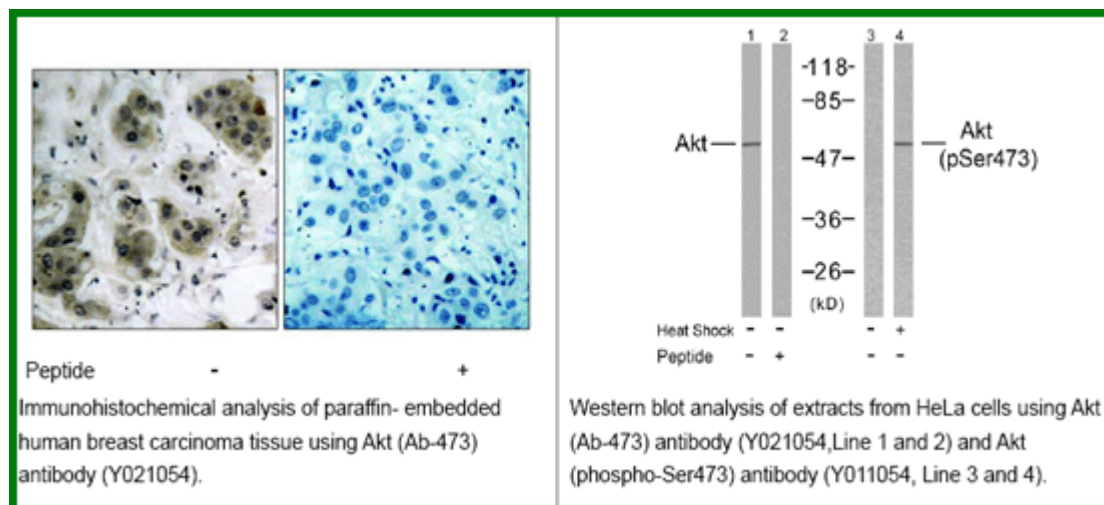
Purity: The antibody was affinity-purified from rabbit antiserum by affinity-chromatography using epitope-specific immunogen.

Storage buffer: WB: 1:100~1:500 IHC: 1:50~1:100

Form: Liquid

Reference:

Baudhuin LM, et al. (2004) FASEB J Feb; 18(2): 341-3. Min YH, et al. (2004) Cancer Res; 64(15): 5225-31. Feng J, et al. (2004) J Biol Chem; 279(34): 35510-7. Ayala G, et al. (2004) Clin Cancer Res; 10(19): 6572-8. Lungu AO, et al. (2004) J Biol Chem; 279(47): 48794-800.



For research use only

Antagene, Inc. Toll Free: 1-866-964-2589, Fax: 1-888-225-1868, info@antageneinc.com,
www.antageneinc.com