



STAT3 (Ab-705) Antibody

Cat. #: ANTY021045

Species: Human, Mouse and Rat

Quantity: 100ug

Concentration: 100ug/100ul

Storage and Stability:

Store at -20°C/1 year

Immunogen:

The antiserum was produced against synthesized non-phosphopeptide derived from human STAT3 around the phosphorylation site of tyrosine 705 (A-P-YP-L-K).

Specificity:

STAT3 (Ab-705) antibody detects endogenous levels of total STAT3 protein.

Tested Application: WB and IHC

Application Notes: Rabbit IgG in phosphate buffered saline (without Mg²⁺ and Ca²⁺), pH 7.4, 150mM NaCl, 0.02% sodium azide and 50% glycerol.

Raised In: Rabbit

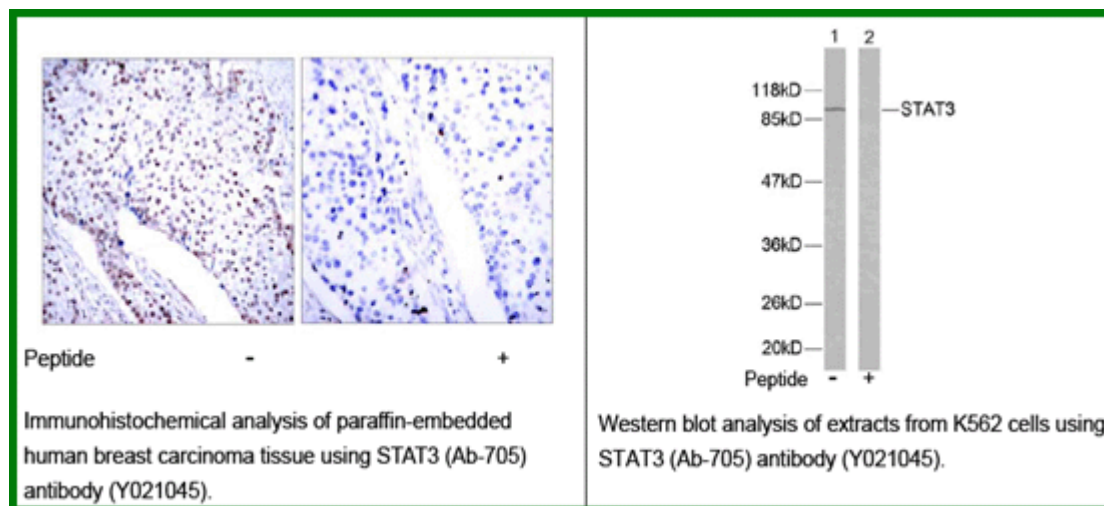
Purity: The antibody was affinity-purified from rabbit antiserum by affinity-chromatography using epitope-specific immunogen.

Storage buffer: WB: 1:500~1:1000 IHC: 1:50~1:100

Form: Liquid

Reference:

Heim M H, (1999) J Recept Signal Transduct Res. 19: 75-120. Takeda K, et al. (1997) Proc Natl Acad Sci USA. 94: 3801-3804. Catlett-Falcone R, et al. (1999) Immunity. 10: 105-115. Garcia R, et al. (1998) J Biomed Sci. 5: 79-85. Bromberg J F, et al. (1999) Cell. 98: 295-303.



For research use only

Antagene, Inc. Toll Free: 1-866-964-2589, Fax: 1-888-225-1868, info@antageneinc.com,
www.antageneinc.com