



**MEF2A (Ab-319) Antibody**

**Cat. #:** ANTY021040

**Species:** Human, Mouse and Rat

**Quantity:** 100ug

**Concentration :** 100ug/100ul

**Storage and Stability:** Store at -20°C/1 year

**Immunogen:** The antiserum was produced against synthesized non-phosphopeptide derived from human MEF2A around the phosphorylation site of threonine 319 (V-T-TP-P-S).

**Specificity:** MEF2A (Ab-319) antibody detects endogenous levels of total MEF2A protein.

**Tested Application:** IHC

**Application Notes:**

Rabbit IgG in phosphate buffered saline (without Mg<sup>2+</sup> and Ca<sup>2+</sup>), pH 7.4, 150mM NaCl, 0.02% sodium azide and 50% glycerol.

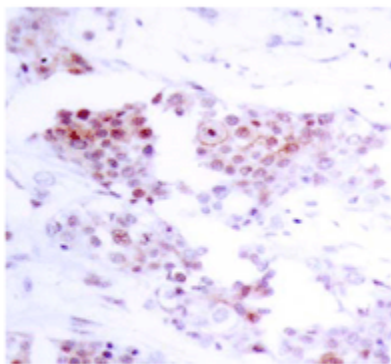
**Raised In:** Rabbit

**Purity:** The antibody was affinity-purified from rabbit antiserum by affinity-chromatography using epitope-specific immunogen.

**Storage buffer:** IHC: 1:50~1:100

**Form:** Liquid

**Reference :** Kato Y, et al. (2000) J Biol Chem. 275(24): 18534-18540. Zhao M, et al. (1999) Mol Cell Biol. 19(1): 21-30.



Immunohistochemical analysis of paraffin-embedded human breast carcinoma tissue using MEF2A (Ab-319) antibody (Y021040).

**For research use only**

Antagene, Inc. Toll Free: 1-866-964-2589, Fax: 1-888-225-1868, [info@antageneinc.com](mailto:info@antageneinc.com),  
[www.antageneinc.com](http://www.antageneinc.com)