



MEF2A (Ab-312) Antibody

Cat. #: ANTY021039

Species: Human, Mouse and Rat

Quantity: 100ug

Concentration : 100ug/100ul

Storage and Stability: Store at -20°C/1 year

Immunogen: The antiserum was produced against synthesized non-phosphopeptide derived from human MEF2A around the phosphorylation site of threonine 312 (L-A-TP-P-V).

Specificity: MEF2A (Ab-312) antibody detects endogenous levels of total MEF2A protein.

Tested Application: WB and IHC

Application Notes:

Rabbit IgG in phosphate buffered saline (without Mg²⁺ and Ca²⁺), pH 7.4, 150mM NaCl, 0.02% sodium azide and 50% glycerol.

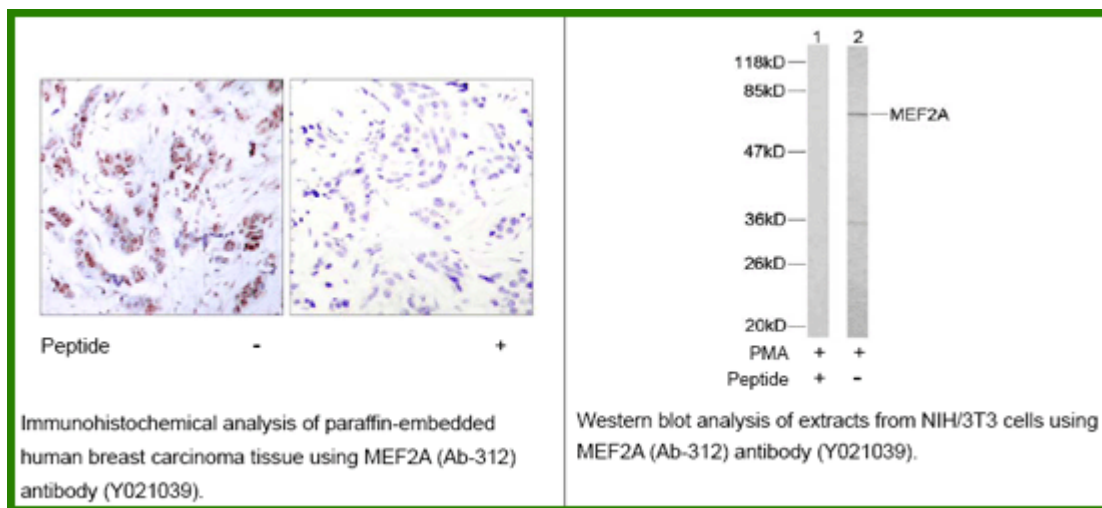
Raised In: Rabbit

Purity: The antibody was affinity-purified from rabbit antiserum by affinity-chromatography using epitope-specific immunogen.

Storage buffer: WB: 1:500~1:1000 IHC: 1:50~1:100

Form: Liquid

Reference : Kato Y, et al. (2000) J Biol Chem. 275(24): 18534-18540. Zhao M, et al. (1999) Mol Cell Biol. 19(1): 21-30.



For research use only

Antagene, Inc. Toll Free: 1-866-964-2589, Fax: 1-888-225-1868, info@antageneinc.com,
www.antageneinc.com