



Myc (Ab-373) Antibody

Cat. #: ANTY021036

Species: Human, Mouse and Rat

Quantity: 100ug

Concentration : 100ug/100ul

Storage and Stability: Store at -20°C/1 year

Immunogen: The antiserum was produced against synthesized non-phosphopeptide derived from human Myc around the phosphorylation site of serine 373 (K-R-SP-F-F).

Specificity: Myc (Ab-373) antibody detects endogenous levels of total Myc protein.

Tested Application: WB

Application Notes:

Rabbit IgG in phosphate buffered saline (without Mg²⁺ and Ca²⁺), pH 7.4, 150mM NaCl, 0.02% sodium azide and 50% glycerol.

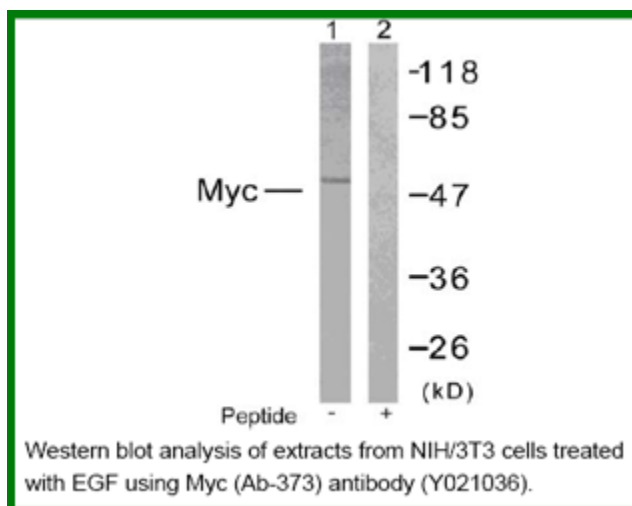
Raised In: Rabbit

Purity: The antibody was affinity-purified from rabbit antiserum by affinity-chromatography using epitope-specific immunogen.

Storage buffer: WB: 1:500~1:1000

Form: Liquid

Reference : Baudino T A, et al. (2001) Mol Cell Biol. 21: 691-702. Blackwood E M, et al. (1991) Science. 251:1211-1217. Henriksson M, et al. (1996) Adv Cancer Res. 68: 109-182. Grandori C, et al. (2000) Annu Rev Cell Dev Biol. 16: 653-699.



For research use only

Antagene, Inc. Toll Free: 1-866-964-2589, Fax: 1-888-225-1868, info@antageneinc.com,
www.antageneinc.com