



### **Myc (Ab-58) Antibody**

**Cat. #:** ANTY021034

**Species:** Human, Mouse and Rat

**Quantity:** 100ug

**Concentration :** 100ug/100ul

**Storage and Stability:** Store at -20°C/1 year

**Immunogen:** The antiserum was produced against synthesized non-phosphopeptide derived from human Myc around the phosphorylation site of threonine 58 (L-P-TP-P-P).

**Specificity:** Myc (Ab-58) antibody detects endogenous levels of total Myc protein.

**Tested Application:** WB and IHC

**Application Notes:**

Rabbit IgG in phosphate buffered saline (without Mg<sup>2+</sup> and Ca<sup>2+</sup>), pH 7.4, 150mM NaCl, 0.02% sodium azide and 50% glycerol.

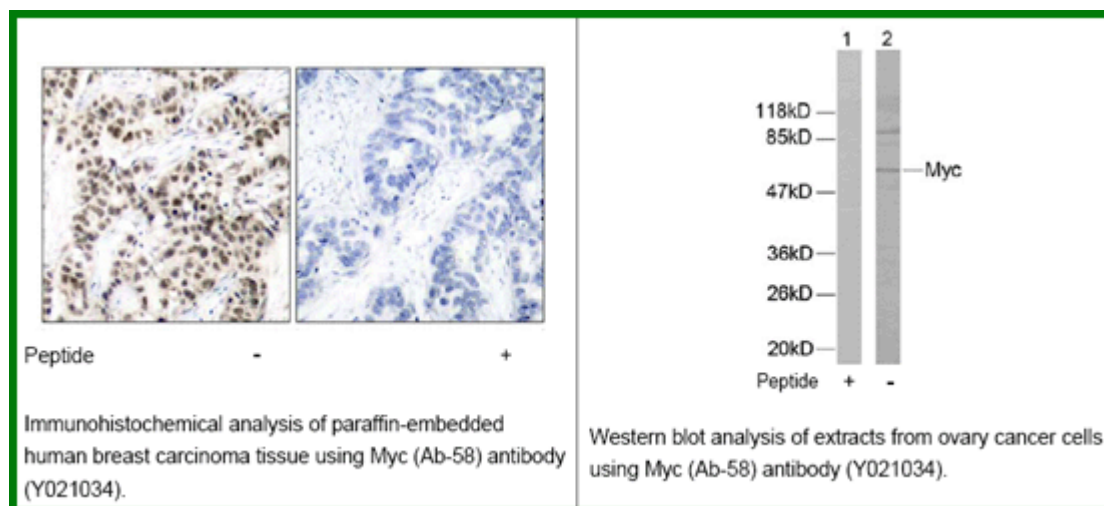
**Raised In:** Rabbit

**Purity:** The antibody was affinity-purified from rabbit antiserum by affinity-chromatography using epitope-specific immunogen.

**Storage buffer:** WB: 1:500~1:1000 IHC: 1:50~1:100

**Form:** Liquid

**Reference :** Jin Z, et al. (2004) J Biol Chem. 279(38): 40209-40219. Welcker M, et al. (2004) Proc Natl Acad Sci U S A. 101(24): 9085-9090. Baudino T A, et al. (2001) Mol Cell Biol. 21: 691-702. Blackwood E M, et al. (1991) Science. 251:1211-1217. Henriksson M, et al. (1996) Adv Cancer Res. 68: 109-182.



**For research use only**

Antagene, Inc. Toll Free: 1-866-964-2589, Fax: 1-888-225-1868, [info@antageneinc.com](mailto:info@antageneinc.com),  
[www.antageneinc.com](http://www.antageneinc.com)