



## ATF2 (Ab-69/51) Antibody

**Cat. #:** ANTY021030

**Species:** Human, Mouse and Rat

**Quantity:** 100ug

**Concentration :** 100ug/100ul

**Storage and Stability:** Store at -20°C/1 year

**Immunogen:** The antiserum was produced against synthesized non-phosphopeptide derived from human ATF-2 around the phosphorylation site of threonine 69 or 51 (D-Q-TP-P-T).

**Specificity:** ATF-2 (Ab-69 or 51) antibody detects endogenous levels of total ATF-2 protein.

**Tested Application:** WB and IHC

### Application Notes:

Rabbit IgG in phosphate buffered saline (without Mg<sup>2+</sup> and Ca<sup>2+</sup>), pH 7.4, 150mM NaCl, 0.02% sodium azide and 50% glycerol.

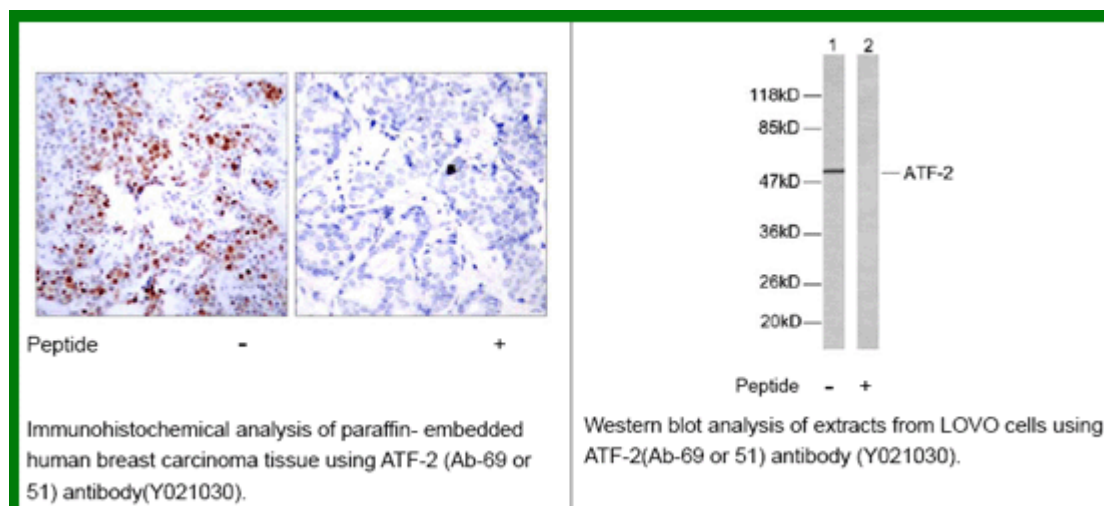
**Raised In:** Rabbit

**Purity:** The antibody was affinity-purified from rabbit antiserum by affinity-chromatography using epitope-specific immunogen.

**Storage buffer:** WB: 1:500~1:1000 IHC: 1:50~1:100

**Form:** Liquid

**Reference :** Sevilla A, et al. (2004) J Biol Chem. 279(26):27458-27465. Alsayed Y, et al. (2001) J Biol Chem. 276(6): 4012-4019. Abdel-Hafiz H A, et al. (1992) Mol Endocrinol. 6: 2079-2089. Gupta S, et al. (1995) Science. 267: 389-393. Van Dam H, et al. (1995) EMBO J. 14(8): 1798-1811.



**For research use only**

Antagene, Inc. Toll Free: 1-866-964-2589, Fax: 1-888-225-1868, [info@antageneinc.com](mailto:info@antageneinc.com),  
[www.antageneinc.com](http://www.antageneinc.com)