



JunD (Ab-255) Antibody

Cat. #: ANTY021028

Species: Human, Mouse and Rat

Quantity: 100ug

Concentration : 100ug/100ul

Storage and Stability: Store at -20°C/1 year

Immunogen: The antiserum was produced against synthesized non-phosphopeptide derived from human JunD around the phosphorylation site of serine 255 (G-E-SP-P-P).

Specificity: J JunD (Ab-255) antibody detects endogenous levels of total JunD protein.

Tested Application: WB and IHC

Application Notes:

Rabbit IgG in phosphate buffered saline (without Mg²⁺ and Ca²⁺), pH 7.4, 150mM NaCl, 0.02% sodium azide and 50% glycerol.

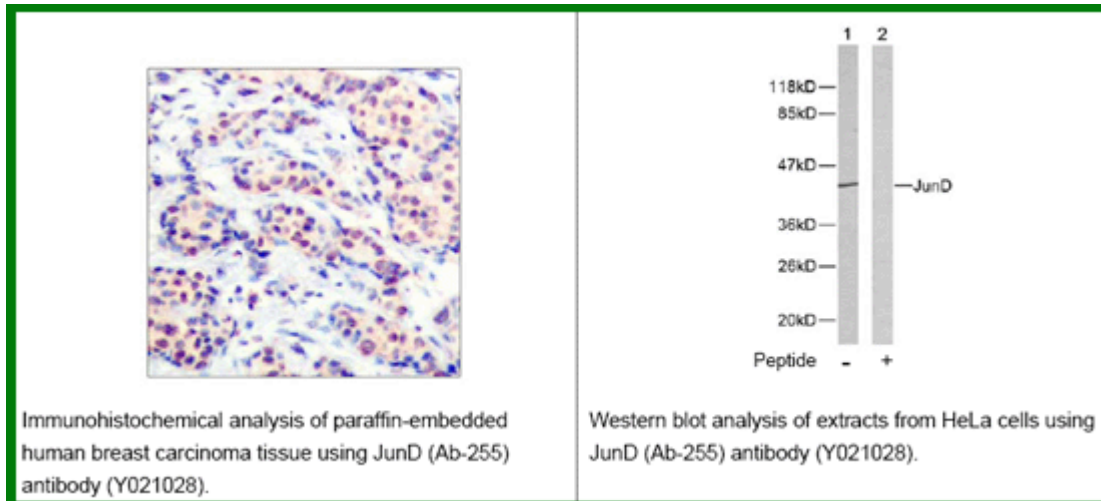
Raised In: Rabbit

Purity: The antibody was affinity-purified from rabbit antiserum by affinity-chromatography using epitope-specific immunogen.

Storage buffer: WB: 1:500~1:1000 IHC: 1:50~1:100

Form: Liquid

Reference : Beausoleil S A, et al. (2004) Proc Natl Acad Sci U S A. 101(33): 12130-12135.



Immunohistochemical analysis of paraffin-embedded human breast carcinoma tissue using JunD (Ab-255) antibody (Y021028).

Western blot analysis of extracts from HeLa cells using JunD (Ab-255) antibody (Y021028).

For research use only