



c-Jun (Ab-170) Antibody

Cat. #: ANTY021023

Species: Human, Mouse and Rat

Quantity: 100ug

Concentration : 100ug/100ul

Storage and Stability: Store at -20°C/1 year

Immunogen: The antiserum was produced against synthesized non-phosphopeptide derived from human c-Jun around the phosphorylation site of tyrosine 170 (P-V-YP-A-N).

Specificity: c-Jun (Ab-170) antibody detects endogenous levels of c-Jun protein around tyrosine 170.

Tested Application: WB and IHC

Application Notes:

Rabbit IgG in phosphate buffered saline (without Mg²⁺ and Ca²⁺), pH 7.4, 150mM NaCl, 0.02% sodium azide and 50% glycerol.

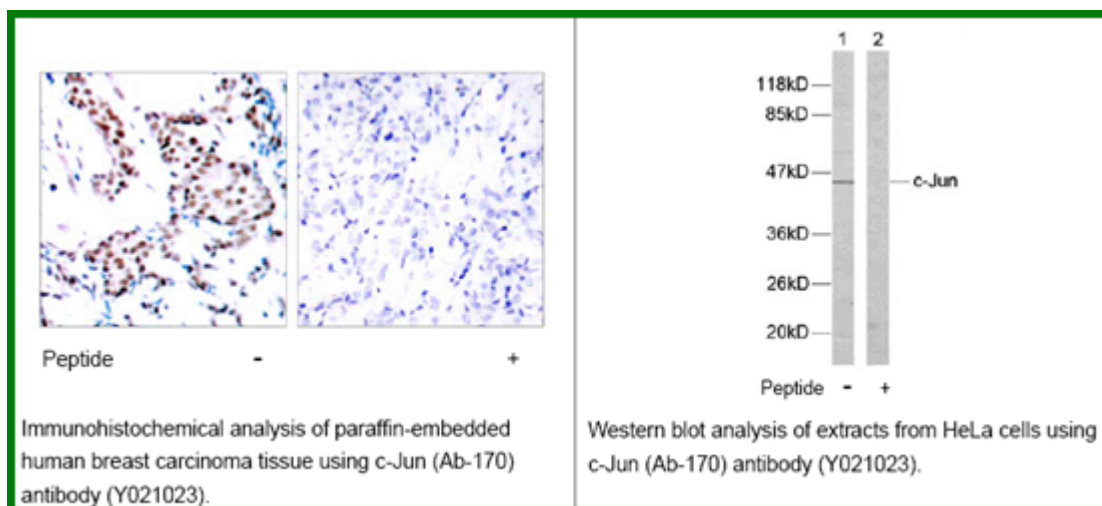
Raised In: Rabbit

Purity: The antibody was affinity-purified from rabbit antiserum by affinity-chromatography using epitope-specific immunogen.

Storage buffer: WB: 1:500~1:1000 IHC: 1:50~1:100

Form: Liquid

Reference : Barila D, et al. (2000) EMBO J.19 (2): 273-281. Binetruy B, et al. (1991) Nature. 351: 122-127. Smeal T, et al. (1991) Nature. 354:494-496. Derijard B, et al. (1994) Cell. 76:1025-1037. Kyriakis J M, et al. (1994) Nature. 369: 156-160.



For research use only

Antagene, Inc. Toll Free: 1-866-964-2589, Fax: 1-888-225-1868, info@antageneinc.com,
www.antageneinc.com