



NF-κB p105/p50 (Ab-337) Antibody Blocking Peptide

Cat. #: ANTY021017

Species: Human, Mouse and Rat

Quantity: 100ug

Concentration : 100ug/100ul

Storage and Stability: Store at -20°C/1 year

Immunogen: The antiserum was produced against synthesized non-phosphopeptide derived from human NF-κB p105/p50 around the phosphorylation site of serine 337 (R-K-SP-D-L).

Specificity: NF-κB p105/p50 (Ab-337) antibody detects endogenous levels of total NF-κB p105/p50 protein.

Tested Application: WB and IHC

Application Notes:

Rabbit IgG in phosphate buffered saline (without Mg²⁺ and Ca²⁺), pH 7.4, 150mM NaCl, 0.02% sodium azide and 50% glycerol.

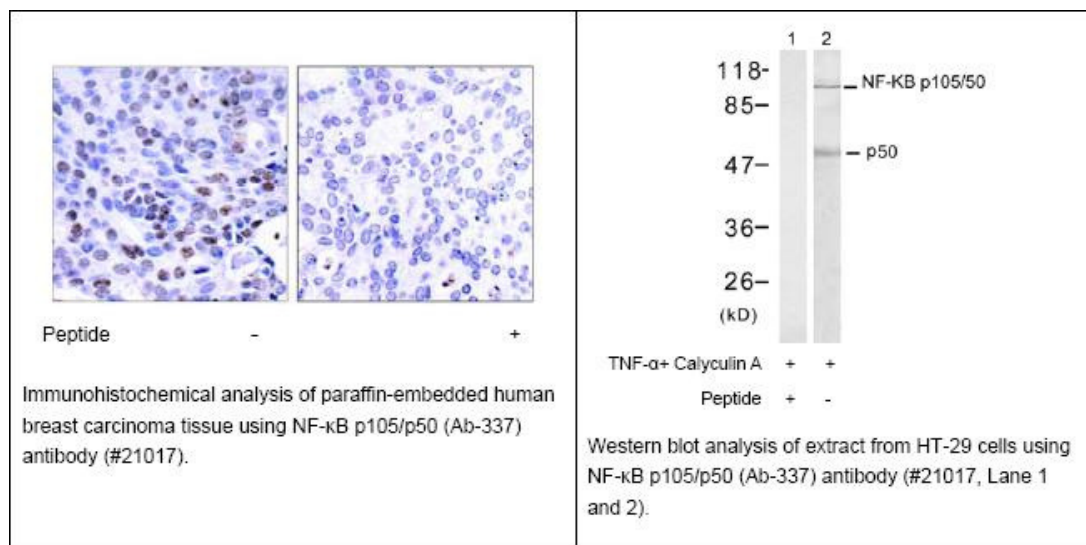
Raised In: Rabbit

Purity: The antibody was affinity-purified from rabbit antiserum by affinity-chromatography using epitope-specific immunogen.

Storage buffer: WB: 1:500~1:1000 IHC: 1:50~1:100

Form: Liquid

Reference : Hou S, et al. (2003) J Biol Chem. 278(46): 45994-45998. Baeuerle P A, et al. (1994) Annu Rev Immunol. 12:141-179. Baeuerle P A, et al. (1996) Cell 87:13-20. Haskill S, et al. (1991) Cell 65:1281-1289.



For research use only

Antagene, Inc. Toll Free: 1-866-964-2589, Fax: 1-888-225-1868, info@antageneinc.com,
www.antageneinc.com