



NF- κ B p65 (Ab-468) Antibody

Cat. #: ANTY021013

Species: Human, Mouse, Rat

Quantity: 100ug

Concentration: 100ug/100ul

Storage and Stability:

Store at -20°C/1 year

Immunogen:

This antiserum was produced against synthesized non-phosphopeptide derived from human NF- κ B p65 around the phosphorylation site of serine 468 (L-A-SP-V-D).

Specificity:

NF- κ B p65 (Ab-468) antibody detects endogenous levels of total NF- κ B p65 protein.

Tested application: WB and IHC

Application Notes: Rabbit IgG in phosphate buffered saline (without Mg²⁺ and Ca²⁺), pH 7.4, 150mM NaCl, 0.02% sodium azide and 50% glycerol.

Raised In: Rabbit

Purity:

The antibody was affinity-purified from rabbit antiserum by affinity-chromatography using epitope-specific immunogen.

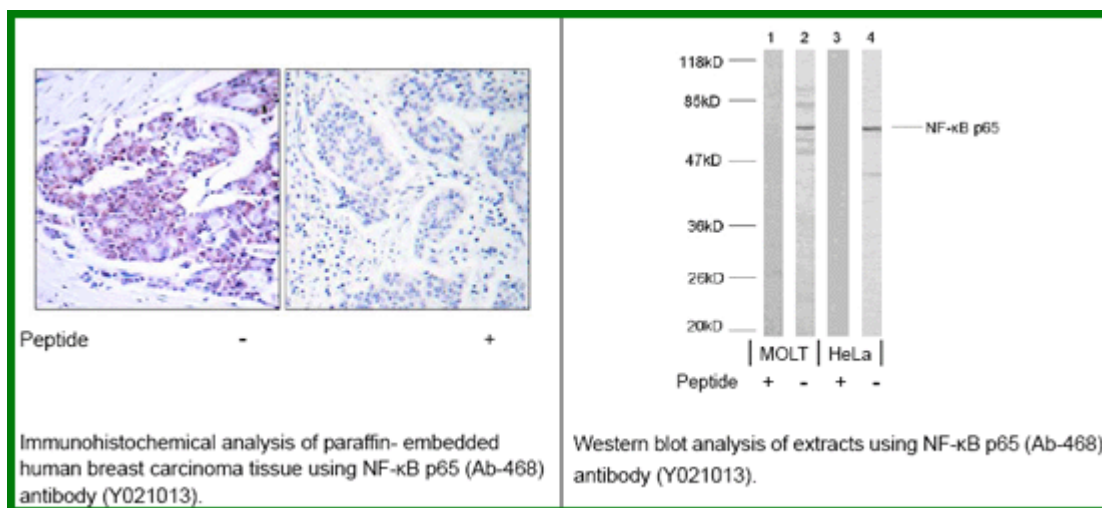
Storage buffer:

WB: 1:500~1:1000 IHC: 1:50~1:100

Form: Liquid

Reference:

Buss H, et al. (2004) J Biol Chem Schmitz ML, et al. (2004) Blood



For research use only

Antagene, Inc. Toll Free: 1-866-964-2589, Fax: 1-888-225-1868, info@antageneinc.com,
www.antageneinc.com