



## NF- $\kappa$ B p65 (Ab-276) Antibody Blocking Peptide

**Cat. #:** ANTY021011

**Species:** Human, Mouse, Rat

**Quantity:** 100ug

**Concentration:** 100ug/100ul

**Storage and Stability:**

Store at -20°C/1 year

**Immunogen:**

The antiserum was produced against synthesized non-phosphopeptide derived from human NF- $\kappa$ B p65 around the phosphorylation site of serine 276 (R-P-SP-D-R).

**Specificity:**

NF- $\kappa$ B p65 (Ab-276) Antibody detects endogenous levels of total NF- $\kappa$ B p65 protein.

**Tested application:** WB and IHC

**Application Notes:** Rabbit IgG in phosphate buffered saline (without Mg<sup>2+</sup> and Ca<sup>2+</sup>), pH 7.4, 150mM NaCl, 0.02% sodium azide and 50% glycerol.

**Raised In:** Rabbit

**Purity:**

The antibody was affinity-purified from rabbit antiserum by affinity-chromatography using epitope-specific immunogen.

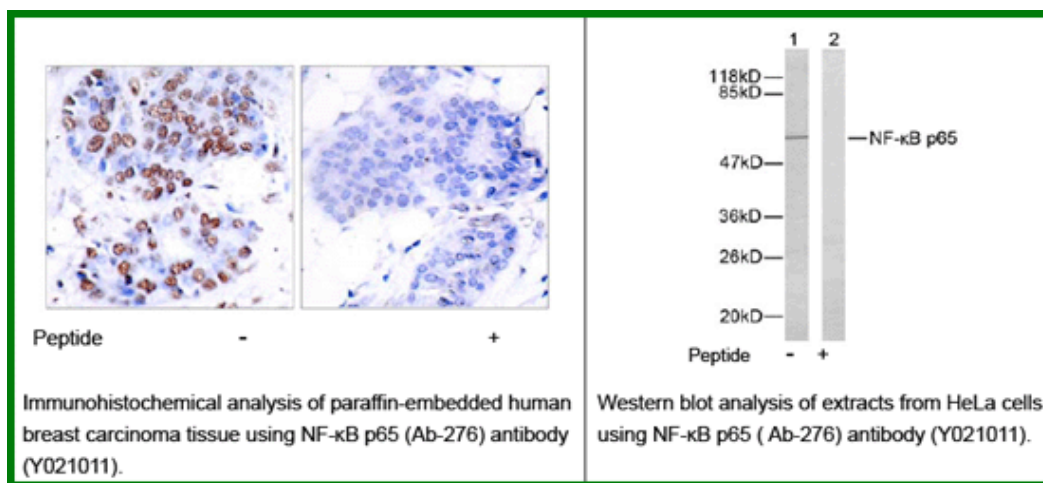
**Storage buffer:**

WB: 1:500~1:1000 IHC: 1:50~1:100

**Form:** Liquid

**Reference:**

Baeuerle P A, et al. (1994) Annu Rev Immunol. 12:141-179. Baeuerle P A, et al. (1996) Cell 87:13-20. Haskill S, et al. (1991) Cell 65:1281-1289. Thompson J E, et al. (1995) Cell 80: 573-582.



**For research use only**

Antagene, Inc. Toll Free: 1-866-964-2589, Fax: 1-888-225-1868, [info@antageneinc.com](mailto:info@antageneinc.com),  
[www.antageneinc.com](http://www.antageneinc.com)