



## GSK3 $\alpha$ (Ab-21) Antibody

**Cat. #:** ANTY021007

**Species:** Human, Mouse, Rat

**Quantity:** 100ug

**Concentration:** 100ug/100ul

**Storage and Stability:**

Store at -20°C/1 year

**Immunogen:**

This antiserum was produced against synthesized non-phosphopeptide derived from human GSK3 $\alpha$  around the phosphorylation site of serine 21 (T-S-SP-F-A).

**Specificity:**

GSK3 $\alpha$  (Ab-21) Antibody detects endogenous levels of total GSK3 $\alpha$  protein.

**Tested application:** WB and IHC

**Application Notes:** Rabbit IgG in phosphate buffered saline (without Mg<sup>2+</sup> and Ca<sup>2+</sup>), pH 7.4, 150mM NaCl, 0.02% sodium azide and 50% glycerol.

**Raised In:** Rabbit

**Purity:**

The antibody was affinity-purified from rabbit antiserum by affinity-chromatography using epitope-specific immunogen.

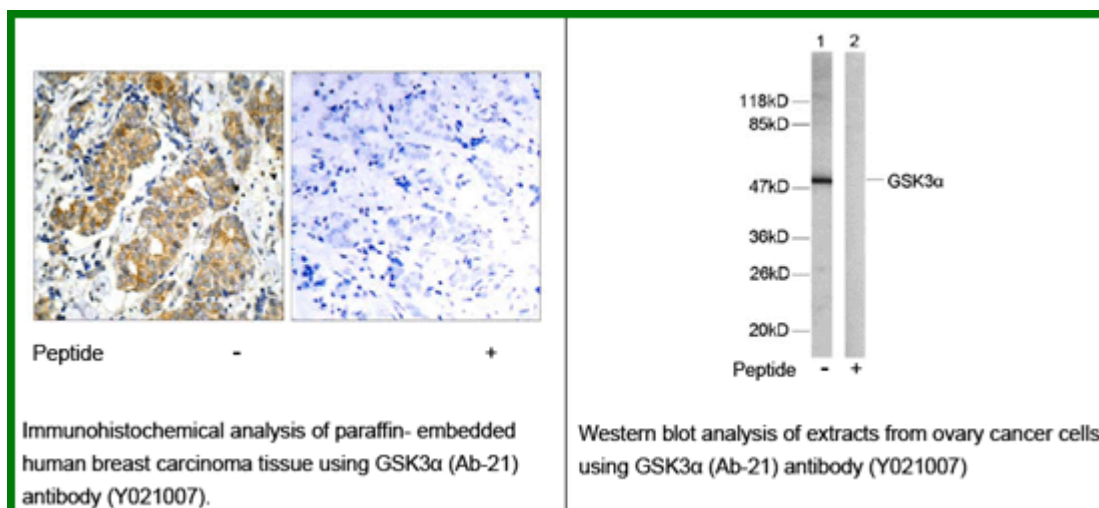
**Storage buffer:**

WB: 1:500~1:1000 IHC: 1:50~1:100

**Form:** Liquid

**Reference:**

Barry FA, et al. (2003) FEBS Lett. 553(1-2): 173-178. Koivisto L, et al. (2003) J Cell Sci. 116(Pt 18): 3749-3760. Welsh G I, et al. (1996) Trends Cell Biol. 6:274-279. Srivastava A K, et al. (1998) Mol. Cell. Biochem. 182: 135-141. Cross D A, et al. (1995) Nature. 378: 785-789.



**For research use only**

Antagene, Inc. Toll Free: 1-866-964-2589, Fax: 1-888-225-1868, [info@antageneinc.com](mailto:info@antageneinc.com),  
[www.antageneinc.com](http://www.antageneinc.com)