



PDK1 (Ab-241) Antibody

Cat. #: ANTY021005

Species: Human, Mouse, Rat

Quantity: 100ug

Concentration: 100ug/100ul

Storage and Stability:

Store at -20°C/1 year

Immunogen:

The antiserum was produced against synthesized non-phosphopeptide derived from human PDK1 around the phosphorylation site of serine 241(A-N-SP-F-V).

Specificity:

PDK1 (Ab-241) antibody detects endogenous levels of total PDK1 protein.

Tested application: WB and IHC

Application Notes: Rabbit IgG in phosphate buffered saline (without Mg²⁺ and Ca²⁺), pH 7.4, 150mM NaCl, 0.02% sodium azide and 50% glycerol.

Raised In: Rabbit

Purity:

The antibody was affinity-purified from rabbit antiserum by affinity-chromatography using epitope-specific immunogen.

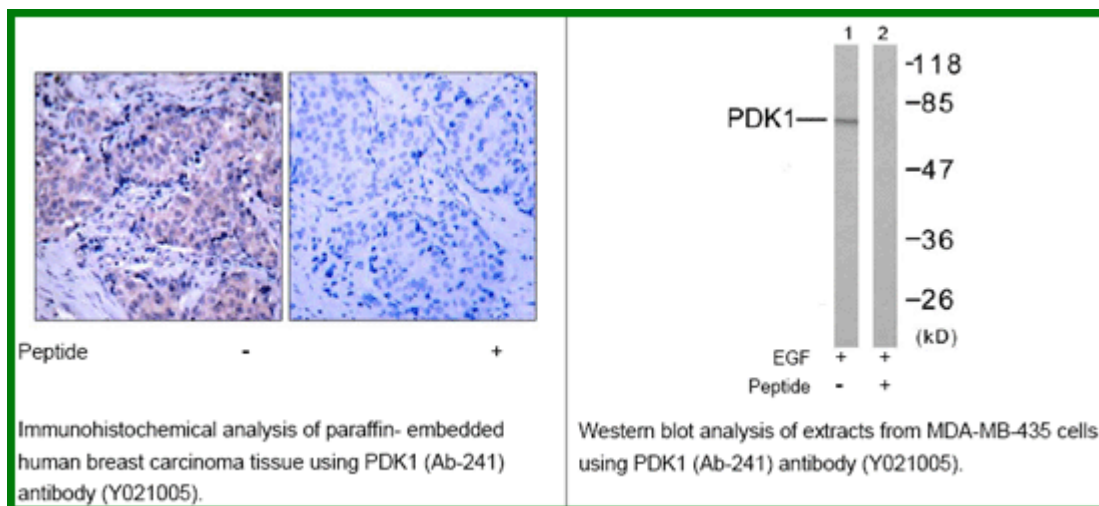
Storage buffer:

WB: 1:500~1:1000 IHC: 1:50~1:100

Form: Liquid

Reference:

Scheid MP, et al. (2005) Mol Cell Biol; 25(6): 2347-63 Chen H, et al. (2001) Biochemistry; 40(39): 11851-9 Sato S, et al. (2002) J Biol Chem; 277(42): 39360-7 Lim MA, et al. (2003) Proc Natl Acad Sci U S A; 100(24): 14006-11 Beausoleil SA, et al. (2004) Proc Natl Acad Sci U S A; 101(33): 12130-5



For research use only

Antagene, Inc. Toll Free: 1-866-964-2589, Fax: 1-888-225-1868, info@antageneinc.com,
www.antageneinc.com