



Elk-1 (Ab-383) Antibody

Cat. #: ANTY021004

Species: Human, Mouse, Rat

Quantity: 100ug

Concentration: 100ug/100ul

Storage and Stability:

Store at -20°C/1 year

Immunogen:

This antiserum was produced against synthesized non-phosphopeptide derived from human Elk-1 around the phosphorylation site of serine 383 (T-L-SP-P-I).

Specificity:

Elk-1(Ab-383) Antibody detects endogenous levels of total Elk-1 protein.

Tested application: WB and IHC

Application Notes: Rabbit IgG in phosphate buffered saline (without Mg²⁺ and Ca²⁺), pH 7.4, 150mM NaCl, 0.02% sodium azide and 50% glycerol.

Raised In: Rabbit

Purity:

The antibody was affinity-purified from rabbit antiserum by affinity-chromatography using epitope-specific immunogen.

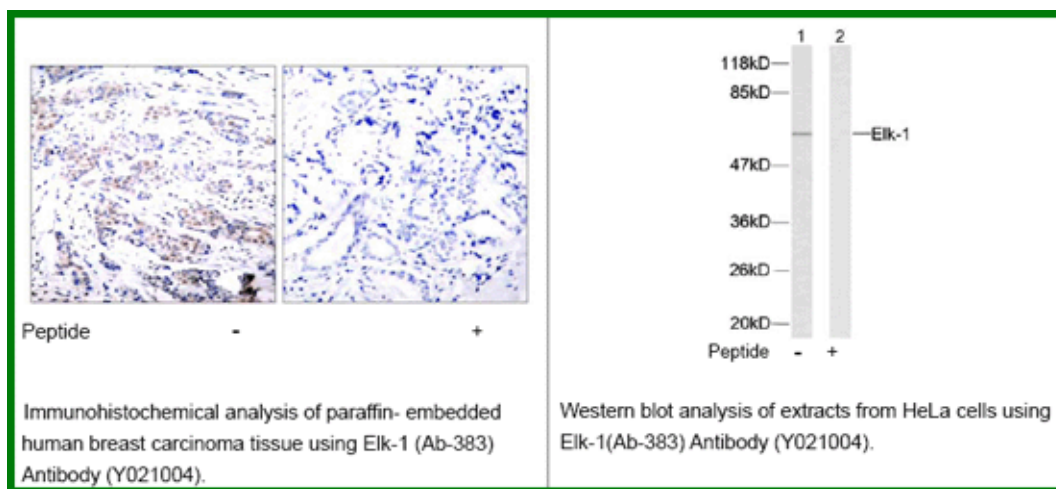
Storage buffer:

WB: 1:500~1:1000 IHC: 1:50~1:100

Form: Liquid

Reference:

Xing J, et al. (1996) Science. 273(5277): 959-963. Janknecht R, et al. (1993) EMBO J. 12(13): 5097-5104. Marais R, et al. (1993) Cell 73: 381-393. Kortenjann M, et al. (1994) Mol Cell Biol. 14: 4815-4824. Cavigelli M, et al. (1995) EMBO J. 14: 5957-5964. Whitmarsh A J, et al. (1995) Science. 269:403-407.



For research use only

Antagene, Inc. Toll Free: 1-866-964-2589, Fax: 1-888-225-1868, info@antageneinc.com,
www.antageneinc.com