



## **SHP-2 (Phospho-Tyr580) Antibody**

**Cat. #:** ANTY011320

**Species:** Human, Mouse, Rat

**Quantity:** 100ug

**Concentration:** 100ug/100ul

### **Storage and Stability:**

Store at -20°C/1 year

### **Immunogen:**

The antiserum was produced against synthesized phosphopeptide derived from human SHP-2 around the phosphorylation site of tyrosine 580 (R-V-YP-E-N).

### **Specificity:**

SHP-2 (Phospho-Tyr580) antibody detects endogenous levels of SHP-2 only when phosphorylated at tyrosine 580.

### **Tested application:** IHC

**Application Notes:** Rabbit IgG in phosphate buffered saline (without Mg<sup>2+</sup> and Ca<sup>2+</sup>), pH 7.4, 150mM NaCl, 0.02% sodium azide and 50% glycerol.

**Raised In:** Rabbit

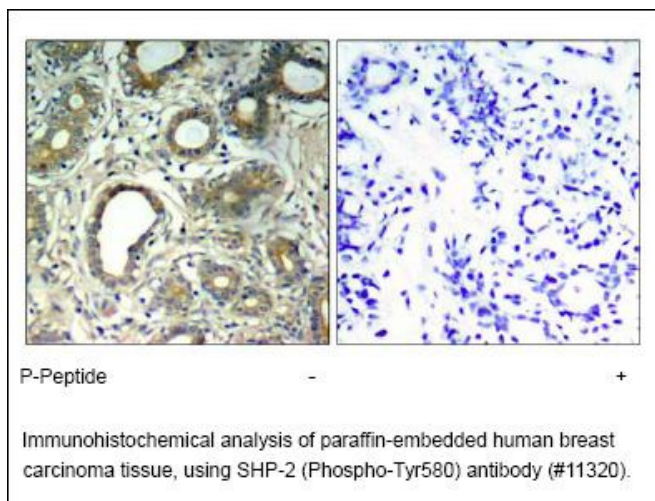
### **Purity:**

The antibody was affinity-purified from rabbit antiserum by affinity-chromatography using epitope-specific phosphopeptide. The antibody against non-phosphopeptide was removed by chromatography using non-phosphopeptide corresponding to the phosphorylation site.

### **Storage buffer:**

IHC: 1:50-1:100

**Form:** Liquid



### **For research use only**

Antagene, Inc. Toll Free: 1-866-964-2589, Fax: 1-888-225-1868, [info@antageneinc.com](mailto:info@antageneinc.com),  
[www.antageneinc.com](http://www.antageneinc.com)