



## **SHP-2 (Phospho-Tyr542) Antibody**

**Cat. #:** ANTY011319

**Species:** Human, Mouse, Rat

**Quantity:** 100ug

**Concentration:** 100ug/100ul

**Storage and Stability:**

Store at -20°C/1 year

**Immunogen:**

The antiserum was produced against synthesized phosphopeptide derived from human SHP-2 around the phosphorylation site of tyrosine 542 (H-E-YP-T-N).

**Specificity:**

SHP-2 (Phospho-Tyr542) antibody detects endogenous levels of SHP-2 only when phosphorylated at tyrosine 542.

**Tested application:** IHC

**Application Notes:** Rabbit IgG in phosphate buffered saline (without Mg<sup>2+</sup> and Ca<sup>2+</sup>), pH 7.4, 150mM NaCl, 0.02% sodium azide and 50% glycerol.

**Raised In:** Rabbit

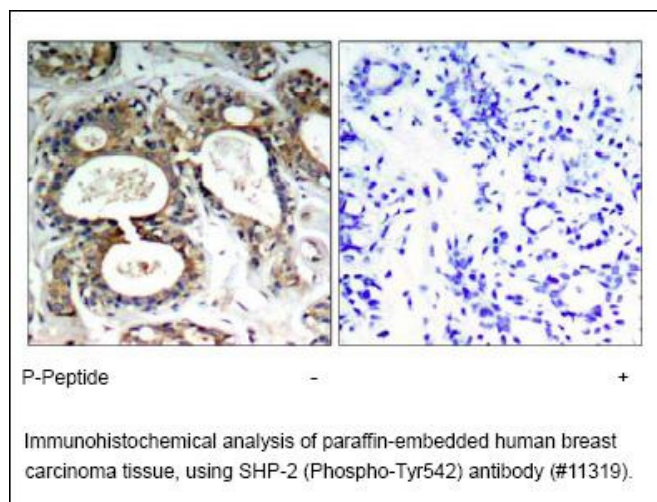
**Purity:**

The antibody was affinity-purified from rabbit antiserum by affinity-chromatography using epitope-specific phosphopeptide. The antibody against non-phosphopeptide was removed by chromatography using non-phosphopeptide corresponding to the phosphorylation site.

**Storage buffer:**

IHC: 1:50-1:100

**Form:** Liquid



**For research use only**

Antagene, Inc. Toll Free: 1-866-964-2589, Fax: 1-888-225-1868, [info@antageneinc.com](mailto:info@antageneinc.com),  
[www.antageneinc.com](http://www.antageneinc.com)