



Shc1 (Phospho-Tyr427) Antibody

Cat. #: ANTY011317

Species: Human, Mouse, Rat

Quantity: 100ug

Concentration: 100ug/100ul

Storage and Stability:

Store at -20°C/1 year

Immunogen:

The antiserum was produced against synthesized phosphopeptide derived from human Shc1 around the phosphorylation site of tyrosine 427 (P-S-YP-V-N).

Specificity:

Shc1 (Phospho-Tyr427) antibody detects endogenous levels of Shc1 only when phosphorylated at tyrosine 427.

Tested application: WB and IHC

Application Notes: Rabbit IgG in phosphate buffered saline (without Mg²⁺ and Ca²⁺), pH 7.4, 150mM NaCl, 0.02% sodium azide and 50% glycerol.

Raised In: Rabbit

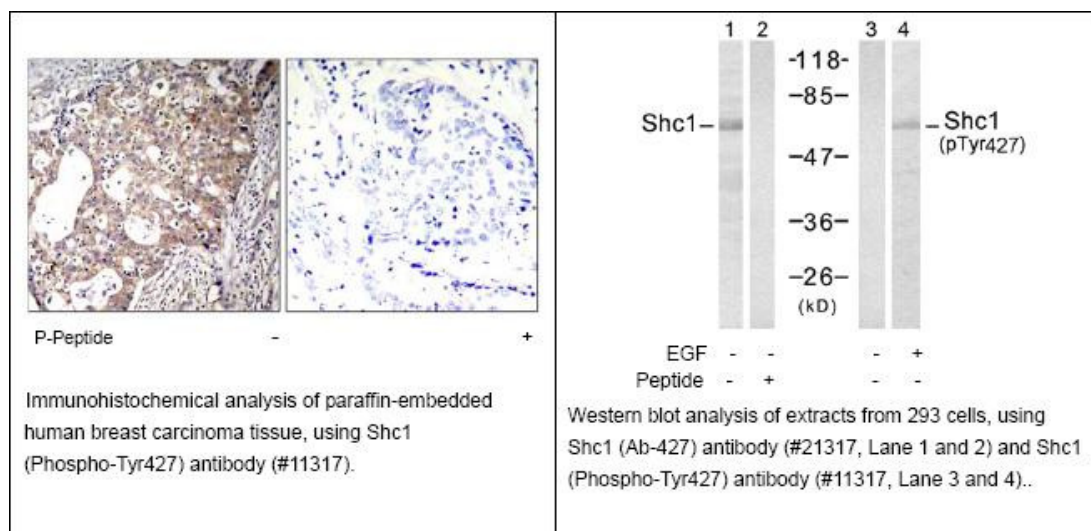
Purity:

The antibody was affinity-purified from rabbit antiserum by affinity-chromatography using epitope-specific phosphopeptide. The antibody against non-phosphopeptide was removed

Storage buffer:

WB: 1:500~1:1000 IHC: 1:50~1:100

Form: Liquid



For research use only

Antagene, Inc. Toll Free: 1-866-964-2589, Fax: 1-888-225-1868, info@antageneinc.com,
www.antageneinc.com