



GSK3 β (Phospho-Tyr216) Antibody

Cat. #: ANTY011301

Species: Human, Mouse, Rat

Quantity: 100ug

Concentration: 100ug/100ul

Storage and Stability:

Store at -20°C/1 year

Immunogen:

The antiserum was produced against synthesized phosphopeptide derived from human GSK3 β around the phosphorylation site of tyrosine 216 (V-S-YP-I-C).

Specificity:

GSK3 β (Phospho-Tyr216) antibody detects endogenous levels of GSK3 β only when phosphorylated at tyrosine 216.

Tested application: WB and IHC

Application Notes: Rabbit IgG in phosphate buffered saline (without Mg²⁺ and Ca²⁺), pH 7.4, 150mM NaCl, 0.02% sodium azide and 50% glycerol.

Raised In: Rabbit

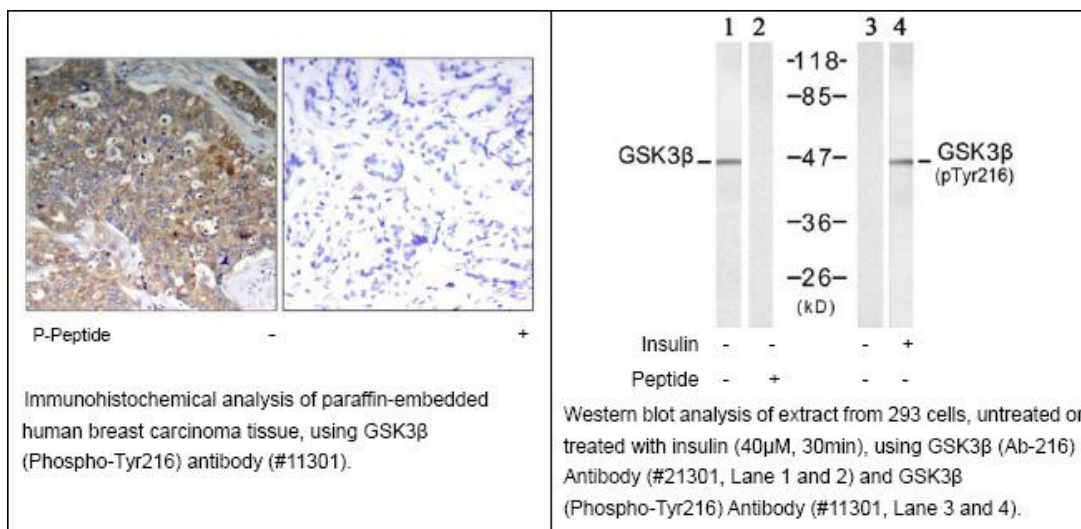
Purity:

The antibody was affinity-purified from rabbit antiserum by affinity-chromatography using epitope-specific phosphopeptide. The antibody against non-phosphopeptide was removed by chromatography using non-phosphopeptide corresponding to the phosphorylation site.

Storage buffer:

WB: 1:500~1:1000 IHC: 1:50-1:100

Form: Liquid



For research use only

Antagene, Inc. Toll Free: 1-866-964-2589, Fax: 1-888-225-1868, info@antageneinc.com,
www.antageneinc.com