



PKCθ (Phospho-Ser676) Antibody

Cat. #: ANTY011297

Species: Human, Mouse and Rat

Quantity: 100ug

Concentration: 100ug/100ul

Storage and Stability:

Store at -20°C/1 year

Immunogen:

The antiserum was produced against synthesized phosphopeptide derived from human PKCθ around the phosphorylation site of serine 676 (R-L-SP-F-A).

Specificity:

PKCθ (phospho-Ser676) antibody detects endogenous levels of PKCθ only when phosphorylated at serine 676.

Tested application: WB and IHC

Application Notes: Rabbit IgG in phosphate buffered saline (without Mg²⁺ and Ca²⁺), pH 7.4, 150mM NaCl, 0.02% sodium azide and 50% glycerol.

Raised In: Rabbit

Purity:

The antibody was affinity-purified from rabbit antiserum by affinity-chromatography using epitope-specific phosphopeptide. The antibody against non-phosphopeptide was removed by chromatography using non-phosphopeptide corresponding to the phosphorylation site.

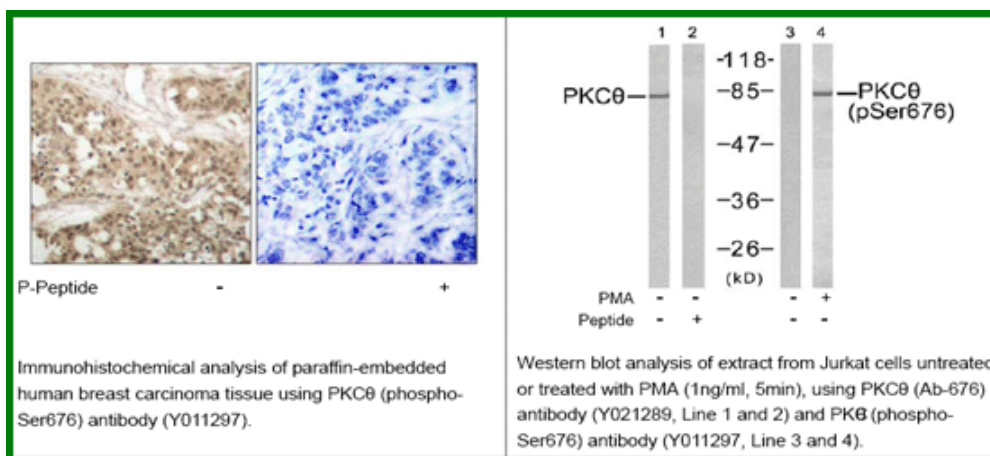
Storage buffer:

WB: 1:500~1:1000 IHC: 1:50~1:100

Form: Liquid

References:

Kristof Van Kolen, et.al. (2006) FEBS J ; 273: 1843 - 1854. Martin Villalba, et.al. (2002) J. Cell Biol ; 157: 253. Jie Zhang, et.al. (2004) J. Biol. Chem ; 279: 22118 - 22123. A. F. Castro, et.al. (1998) Am J Physiol Cell Physiol ; 275: C113 - C119.



For research use only

Antagene, Inc. Toll Free: 1-866-964-2589, Fax: 1-888-225-1868, info@antageneinc.com,
www.antageneinc.com