



## **MARCKS (Phospho-Ser158) Antibody**

**Cat. #:** ANTY011293

**Species:** Human, Mouse and Rat

**Quantity:** 100ug

**Concentration :** 100ug/100ul

**Storage and Stability:** Store at -20°C/1 year

**Immunogen:** The antiserum was produced against synthesized phosphopeptide derived from human MARCKS around the phosphorylation site of serine 158 (R-F-SP-F-K).

**Tested Application:** WB

### **Application Notes:**

Rabbit IgG in phosphate buffered saline (without Mg<sup>2+</sup> and Ca<sup>2+</sup>), pH 7.4, 150mM NaCl, 0.02% sodium azide and 50% glycerol.

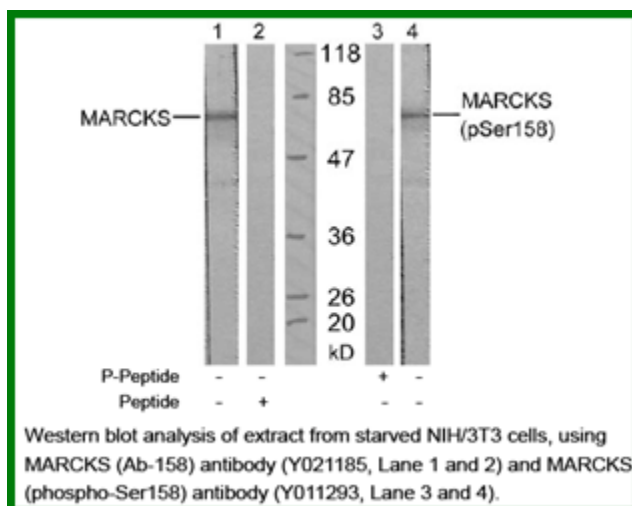
**Raised In:** Rabbit

**Purity:** The antibody was affinity-purified from rabbit antiserum by affinity-chromatography using epitope-specific phosphopeptide. The antibody against non-phosphopeptide was removed by chromatography using non-phosphopeptide corresponding to the phosphorylation site.

**Storage buffer:** WB: 1:500~1:1000

**Form:** Liquid

**Reference :** Pariser H, et al. Proc Natl Acad Sci U S A 2005 Aug 30; 102(35): 12407-12412 Nagumo H, et al. Biochem Biophys Res Commun 2001 Jan 26; 280(3): 605-609 Yamamoto H, et al. Arch Biochem Biophys 1998 Nov 15; 359(2): 151-159



**For research use only**

Antagene, Inc. Toll Free: 1-866-964-2589, Fax: 1-888-225-1868, [info@antageneinc.com](mailto:info@antageneinc.com),  
[www.antageneinc.com](http://www.antageneinc.com)