



Gab1 (Phospho-Tyr627) Antibody

Cat. #: ANTY011291

Species: Human, Mouse

Quantity: 100ug

Concentration: 100ug/100ul

Storage and Stability:

Store at -20°C/1 year

Immunogen:

The antiserum was produced against synthesized phosphopeptide derived from human Gab1 around the phosphorylation site of tyrosine 627 (V-E-YP-L-D).

Specificity: Gab1 (phospho-Tyr627) antibody detects endogenous levels of Gab1 only when phosphorylated at tyrosine 627.

Tested application: WB

Application Notes: Rabbit IgG in phosphate buffered saline (without Mg²⁺ and Ca²⁺), pH 7.4, 150mM NaCl, 0.02% sodium azide and 50% glycerol.

Raised In: Rabbit

Purity:

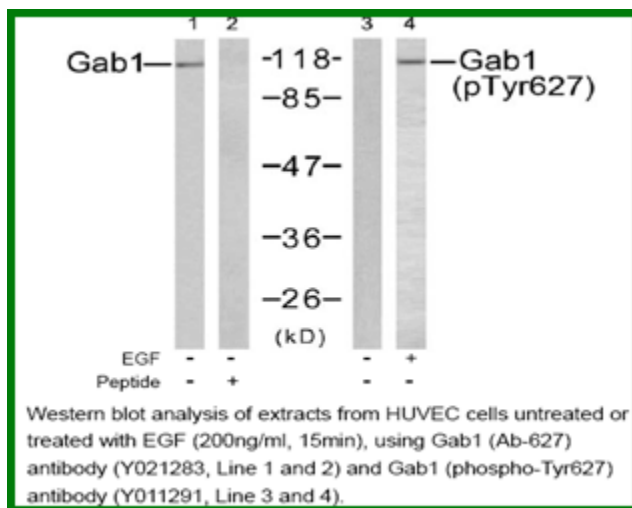
The antibody was affinity-purified from rabbit antiserum by affinity-chromatography using epitope-specific phosphopeptide. The antibody against non-phosphopeptide was removed by chromatography using non-phosphopeptide corresponding to the phosphorylation site.

Storage buffer: WB: 1:500~1:1000

Form: Liquid

Reference:

Anders Kallin, et,al. (2004) J. Biol. Chem ; 279: 17897 - 17904. Hideto Kameda, et,al. (2001) Cell Growth Differ ; 12: 307. Masaki Osawa, et,al. (2002) J. Cell Biol ; 158: 773.



For research use only

Antagene, Inc. Toll Free: 1-866-964-2589, Fax: 1-888-225-1868, info@antageneinc.com,
www.antageneinc.com