



BIM (Phospho-Ser69/65) Antibody

Cat. #: ANTY011288

Species: Human, Mouse and Rat

Quantity: 100ug

Concentration: 100ug/100ul

Storage and Stability:

Store at -20°C/1 year

Immunogen:

The antiserum was produced against synthesized phosphopeptide derived from human BIM around the phosphorylation site of serine 69 (P-A-SP-P-G).

Specificity: BIM (phospho-Ser69/65) antibody detects endogenous levels of BIM only when phosphorylated at serine 69/65.

Tested application: IHC

Application Notes: Rabbit IgG in phosphate buffered saline (without Mg²⁺ and Ca²⁺), pH 7.4, 150mM NaCl, 0.02% sodium azide and 50% glycerol.

Raised In: Rabbit

Purity:

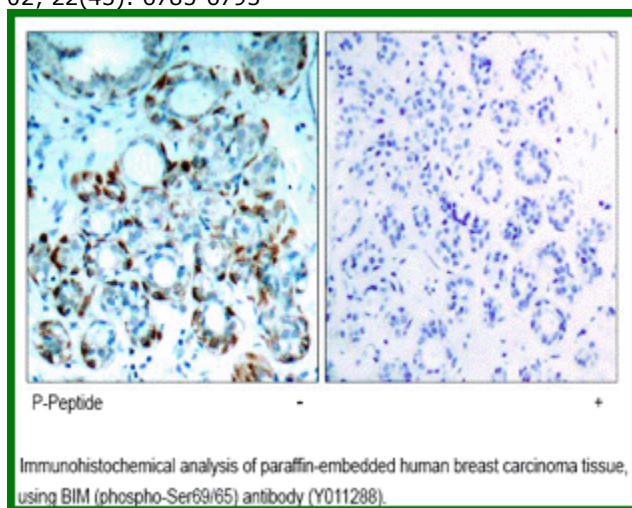
The antibody was affinity-purified from rabbit antiserum by affinity-chromatography using epitope-specific phosphopeptide. The antibody against non-phosphopeptide was removed by chromatography using non-phosphopeptide corresponding to the phosphorylation site.

Storage buffer: IHC: 1:50~1:100

Form: Liquid

Reference:

Fukazawa H, et al. (2004) Mol Cancer Ther Oct; 3(10): 1281-1288 Luciano F, et al. (2003) Oncogene Oct 02; 22(43): 6785-6793



For research use only

Antagene, Inc. Toll Free: 1-866-964-2589, Fax: 1-888-225-1868, info@antageneinc.com,
www.antageneinc.com