



CaMKII (Phospho-Thr286) Antibody

Cat. #: ANTY011287

Species: Human, Mouse and Rat

Quantity: 100ug

Concentration: 100ug/100ul

Storage and Stability:

Store at -20°C/1 year

Immunogen:

The antiserum was produced against synthesized phosphopeptide derived from human CaMKII around the phosphorylation site of threonine 286 (Q-E-TP-V-D).

Specificity: CaMKII (phospho-Thr286) antibody detects endogenous levels of CaMKII only when phosphorylated at threonine 286.

Tested application: WB

Application Notes: Rabbit IgG in phosphate buffered saline (without Mg²⁺ and Ca²⁺), pH 7.4, 150mM NaCl, 0.02% sodium azide and 50% glycerol.

Raised In: Rabbit

Purity:

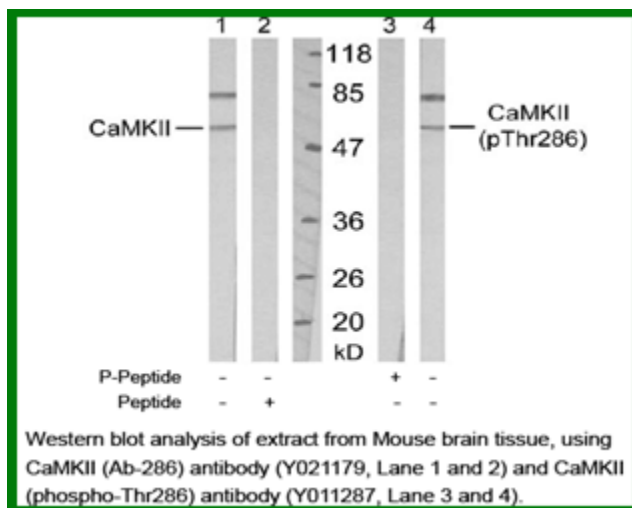
The antibody was affinity-purified from rabbit antiserum by affinity-chromatography using epitope-specific phosphopeptide. The antibody against non-phosphopeptide was removed by chromatography using non-phosphopeptide corresponding to the phosphorylation site.

Storage buffer: WB: 1:500~1:1000

Form: Liquid

Reference:

Pak JH, et al. Proc Natl Acad Sci U S A. 2000 Oct 10; 97(21): 11232-11237 Hudmon A, et al. J Cell Biol. Author manuscript; available in PMC 2006 May 7 Miller P, et al. PLoS Biol. 2005 Apr; 3(4): e107 Runyan JD, et al. Learn Mem. 2005 Mar; 12(2): 103-110.



For research use only

Antagene, Inc. Toll Free: 1-866-964-2589, Fax: 1-888-225-1868, info@antageneinc.com,
www.antageneinc.com