



p70 S6 Kinase (Phospho-Ser424) Antibody

Cat. #: ANTY011284

Species: Human, Mouse and Rat

Quantity: 100ug

Concentration: 100ug/100ul

Storage and Stability:

Store at -20°C/1 year

Immunogen:

The antiserum was produced against synthesized phosphopeptide derived from human p70 S6 Kinase around the phosphorylation site of serine 424 (P-V-SP-P-V).

Specificity: p70 S6 Kinase (phospho-Ser411) antibody detects endogenous levels of p70 S6 Kinase only when phosphorylated at serine 424.

Tested application: WB, IHC

Application Notes: Rabbit IgG in phosphate buffered saline (without Mg²⁺ and Ca²⁺), pH 7.4, 150mM NaCl, 0.02% sodium azide and 50% glycerol.

Raised In: Rabbit

Purity:

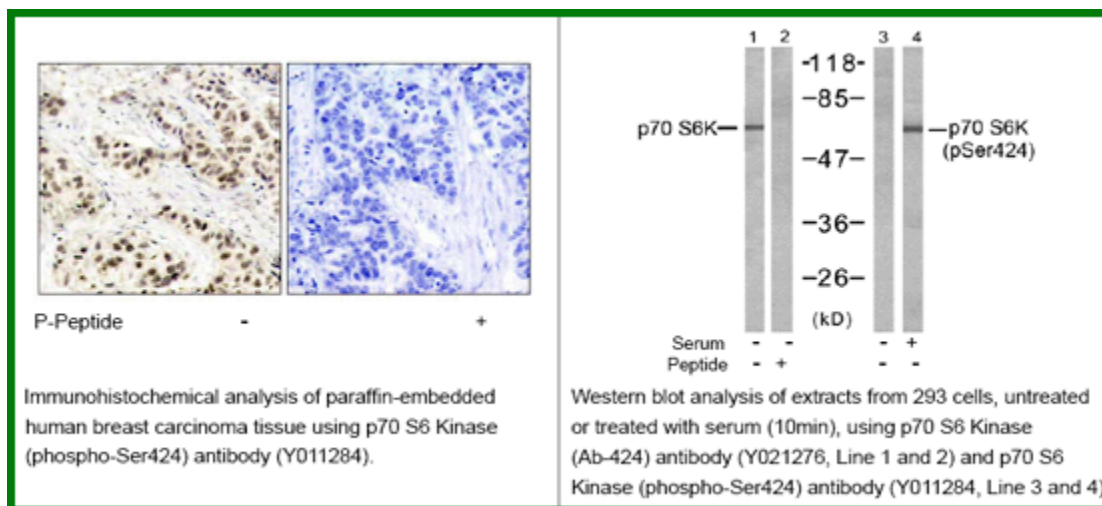
The antibody was affinity-purified from rabbit antiserum by affinity-chromatography using epitope-specific phosphopeptide. The antibody against non-phosphopeptide was removed by chromatography using non-phosphopeptide corresponding to the phosphorylation site.

Storage buffer: WB: 1:500~1:1000 IHC: 1:50-1:100

Form: Liquid

Reference:

Satoru Eguchi et al. (1999) J Biol Chem, Vol. 274: 36843-36851 Papst PJ, et al. (1998) J Biol Chem. 273(24):15077-84. Ulrike Krause et al. (2002) Eur. J. Biochem. 269: 3751-3759 c Le, X.F, et al. (2003) Oncogene 22: 484-97



For research use only

Antagene, Inc. Toll Free: 1-866-964-2589, Fax: 1-888-225-1868, info@antageneinc.com, www.antageneinc.com