



eIF2 α (Phospho-Ser51) Antibody

Cat. #: ANTY011279

Species: Human, Mouse and Rat

Quantity: 100ug

Concentration: 100ug/100ul

Storage and Stability:

Store at -20°C/1 year

Immunogen:

The antiserum was produced against synthesized phosphopeptide derived from human eIF2 α around the phosphorylation site of serine 51 (E-L-SP-R-R).

Specificity: eIF2 α (phospho-Ser51) antibody detects endogenous levels of eIF2 α only when phosphorylated at serine 51.

Tested application: Western Blot

Application Notes: Rabbit IgG in phosphate buffered saline (without Mg²⁺ and Ca²⁺), pH 7.4, 150mM NaCl, 0.02% sodium azide and 50% glycerol.

Raised In: Rabbit

Purity:

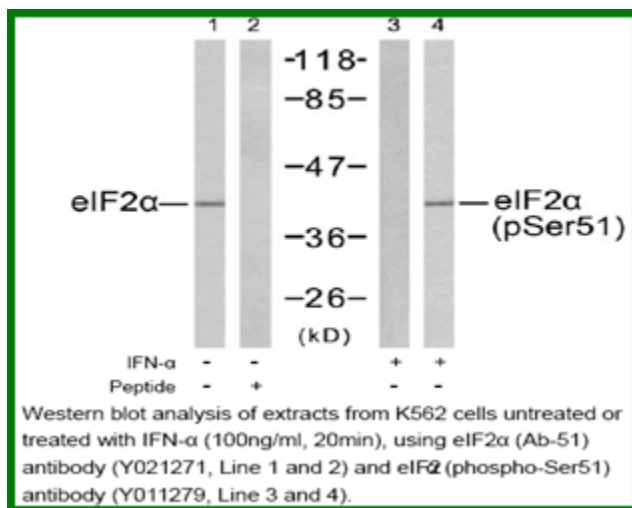
The antibody was affinity-purified from rabbit antiserum by affinity-chromatography using epitope-specific phosphopeptide. The antibody against non-phosphopeptide was removed by chromatography using non-phosphopeptide corresponding to the phosphorylation site.

Storage buffer: WB: 1:500~1:1000

Form: Liquid

References

Xavier Saelens, et.al. (2001) J. Biol. Chem; 276: 41620 - 41628. Hiroyuki Kubota, et.al. (2003) J. Biol. Chem ; 278: 20457 - 20460. Shijian Chu, et.al. (2006) Am J Physiol Lung Cell Mol Physiol ; 291: L983 - L992. Eileen Connolly, et.al. (2006) Mol. Cell. Biol ; 26: 3955 - 3965.



For research use only

Antagene, Inc. Toll Free: 1-866-964-2589, Fax: 1-888-225-1868, info@antageneinc.com,
www.antageneinc.com