



p62Dok (phospho-Tyr362) Antibody

Cat. #: ANTY011276

Species: Human, Mouse and Rat

Quantity: 100ug

Concentration: 100ug/100ul

Storage and Stability:

Store at -20°C/1 year

Immunogen:

The antiserum was produced against synthesized phosphopeptide derived from human p62Dok around the phosphorylation site of tyrosine 362 (P-I-YP-D-E).

Specificity: p62Dok (phospho-Tyr362) antibody detects endogenous levels of p62Dok only when phosphorylated at tyrosine 362.

Tested application: WB

Application Notes: Rabbit IgG in phosphate buffered saline (without Mg²⁺ and Ca²⁺), pH 7.4, 150mM NaCl, 0.02% sodium azide and 50% glycerol.

Raised In: Rabbit

Purity:

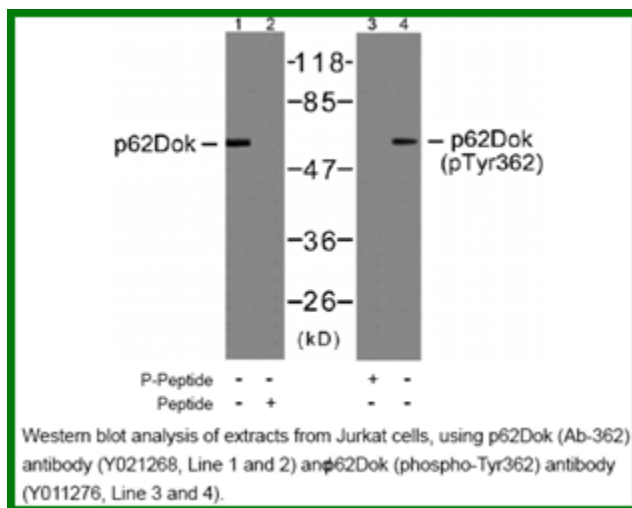
The antibody was affinity-purified from rabbit antiserum by affinity-chromatography using epitope-specific phosphopeptide. The antibody against non-phosphopeptide was removed by chromatography using non-phosphopeptide corresponding to the phosphorylation site.

Storage buffer: WB: 1:500~1:1000

Form: Liquid

References

Zhou Songyang, et.al. (2001) J. Biol. Chem ; 276: 2459 - 2465. Jean-Guy Némorin, et.al.(2000) J. Biol. Chem ; 275: 14590. Yuji Yamanashi, et.al.(2000) Genes & Dev ; 14: 11. Ibuki Kato, et.al.(2002) J. Immunol ; 168: 629.



For research use only

Antagene, Inc. Toll Free: 1-866-964-2589, Fax: 1-888-225-1868, info@antageneinc.com,
www.antageneinc.com