



CREB (Phospho-Ser129) Antibody

Cat. #: ANTY011273

Species: Human, Mouse and Rat

Quantity: 100ug

Concentration: 100ug/100ul

Storage and Stability:

Store at -20°C/1 year

Immunogen:

The antiserum was produced against synthesized phosphopeptide derived from human CREB around the phosphorylation site of serine 129 (I-L-SP-R-R).

Specificity: CREB (phospho-Ser129) antibody detects endogenous levels of CREB only when phosphorylated at serine 129.

Tested application: IHC

Application Notes: Rabbit IgG in phosphate buffered saline (without Mg²⁺ and Ca²⁺), pH 7.4, 150mM NaCl, 0.02% sodium azide and 50% glycerol.

Raised In: Rabbit

Purity:

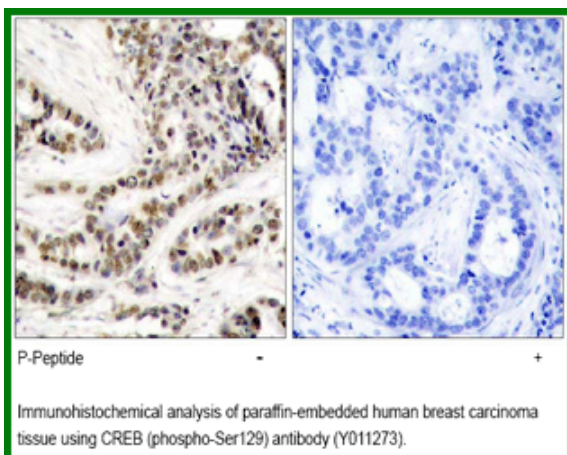
The antibody was affinity-purified from rabbit antiserum by affinity-chromatography using epitope-specific phosphopeptide. The antibody against non-phosphopeptide was removed by chromatography using non-phosphopeptide corresponding to the phosphorylation site.

Storage buffer: IHC: 1:50~1:100

Form: Liquid

References

Chrystelle V. Garat, et al. (2006) Mol. Cell. Biol ; 26: 4934 - 4948. Lilah Rothen, et al. (2004) Mol. Pharmacol ; 66: 1536 - 1543. Darren R. Tyson, et al. (2002) Endocrinology; 143: 674. Kyung-Woo Park, et al. (2003) Arterioscler. Thromb. Vasc. Biol ; 23: 1364.



For research use only

Antagene, Inc. Toll Free: 1-866-964-2589, Fax: 1-888-225-1868, info@antageneinc.com,
www.antageneinc.com