



Cortactin (Phospho-Tyr466) Antibody

Cat. # ANTY011272

Species: Human and Mouse

Quantity: 100ug

Concentration: 100ug/100ul

Storage and Stability: Store at -20°C/1 year

Immunogen : The antiserum was produced against synthesized phosphopeptide derived from mouse Cortactin around the phosphorylation site of tyrosine 466 (P-V-YP-E-T).

Specificity: Cortactin (Phospho-Tyr466) antibody detects endogenous levels of Cortactin only when phosphorylated at tyrosine 466.

Tested application: WB

Application Notes: Rabbit IgG in phosphate buffered saline (without Mg²⁺ and Ca²⁺), pH 7.4, 150mM NaCl, 0.02% sodium azide and 50% glycerol.

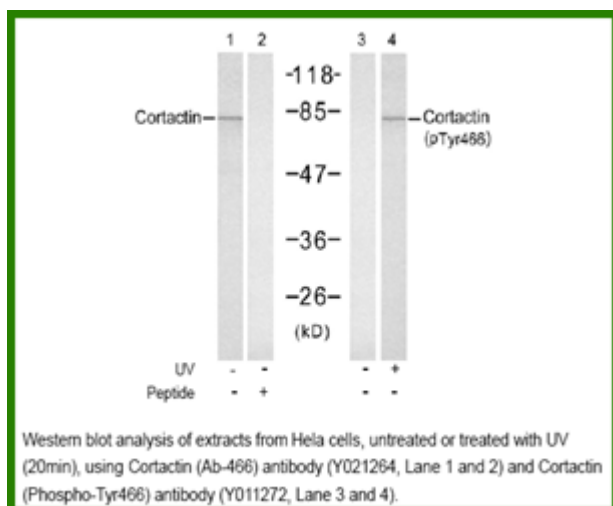
Raised In: Rabbit

Purity : The antibody was affinity-purified from rabbit antiserum by affinity-chromatography using epitope-specific phosphopeptide. The antibody against non-phosphopeptide was removed by chromatography using non-phosphopeptide corresponding to the phosphorylation site.

Storage buffer: WB: 1:500~1:1000

Form: Liquid

References: Luo C, et al. (2006) J Biol Chem ; 281(40):30081-30093 Head JA, et al. (2003) Mol Biol Cell ;14(8):3216-3229 Li Y, et al. (2000) J Biol Chem ; 275(47): 37187-37193 Kinley AW, et al. (2003) Curr Biol ; 13(5): 384-393



For research use only

Antagene, Inc. Toll Free: 1-866-964-2589, Fax: 1-888-225-1868, info@antageneinc.com,
www.antageneinc.com

