



## Histone H2A.X (Phospho-Ser139) Antibody

**Cat. #:** ANTY011268

**Species:** Human, Mouse and Rat

**Quantity:** 100ug

**Concentration:** 100ug/100ul

**Storage and Stability:**

Store at -20°C/1 year

**Immunogen:**

The antiserum was produced against synthesized phosphopeptide derived from human Histone H2A.X around the phosphorylation site of serine 139 (Q-A-SP-Q-E).

**Specificity:**

Histone H2A.X (phospho-Ser139) antibody detects endogenous levels of Histone H2A.X only when phosphorylated at serine 139.

**Tested application:** WB

**Application Notes:** Rabbit IgG in phosphate buffered saline (without Mg<sup>2+</sup> and Ca<sup>2+</sup>), pH 7.4, 150mM NaCl, 0.02% sodium azide and 50% glycerol.

**Raised In:** Rabbit

**Purity:**

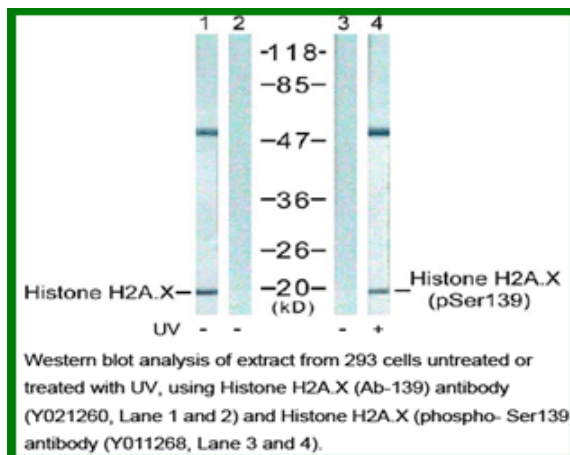
The antibody was affinity-purified from rabbit antiserum by affinity-chromatography using epitope-specific phosphopeptide. The antibody against non-phosphopeptide was removed by chromatography using non-phosphopeptide corresponding to the phosphorylation site.

**Storage buffer:** WB: 1:500~1:1000

**Form:** Liquid

**References**

Yaneva M, et al. (2005) Nucleic Acids Res. 33(16): 5320-5330. Tsukuda T, et al.(2006) Nature. Author manuscript; available in PMC 2006 March 6.



**For research use only**

Antagene, Inc. Toll Free: 1-866-964-2589, Fax: 1-888-225-1868, [info@antageneinc.com](mailto:info@antageneinc.com),  
[www.antageneinc.com](http://www.antageneinc.com)