



Synapsin (Phospho-Ser9) Antibody

Cat. #: ANTY011267

Species: Human, Mouse, Rat

Quantity: 100ug

Concentration: 100ug/100ul

Storage and Stability: Store at -20°C/1 year

Immunogen: The antiserum was produced against synthesized phosphopeptide derived from human synapsin around the phosphorylation site of serine 9 (R-L-SP-D-S).

Specificity: Synapsin (phospho-Ser9) antibody detects endogenous levels of synapsin only when phosphorylated at serine 9.

Tested Application: Western Blot

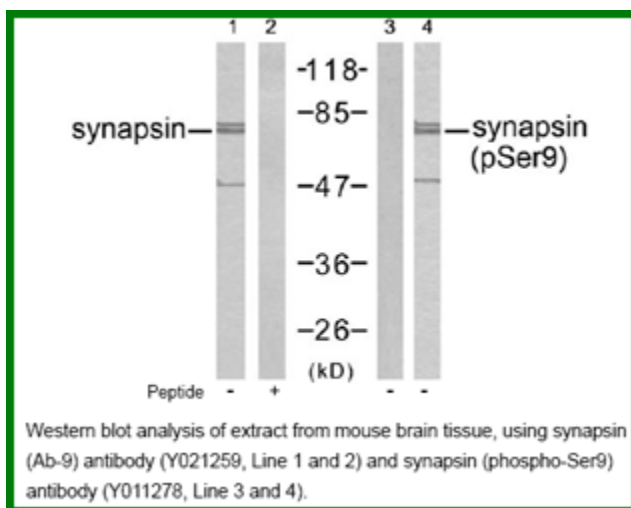
Application Notes: Rabbit IgG in phosphate buffered saline (without Mg²⁺ and Ca²⁺), pH 7.4, 150mM NaCl, 0.02% sodium azide and 50% glycerol.

Raised In: Rabbit

Purity: The antibody was affinity-purified from rabbit antiserum by affinity-chromatography using epitope-specific phosphopeptide. The antibody against non-phosphopeptide was removed by chromatography using non-phosphopeptide corresponding to the phosphorylation site.

Storage Buffer: WB: 1:500~1:1000

Reference: Diviya Sinha, et.al. (2005) Am J Physiol Renal Physiol ; 288: F703 - F713. Franco Onofri, et.al. (2000) J. Biol. Chem ; 275: 29857. Dario Bonanomi, et.al. (2005) J. Neurosci; 25: 7299 - 7308. Hiroshi Tokumitsu, et.al. (2005) J. Biol. Chem ; 280: 35108 - 35118.



For research use only

Antagene, Inc. Toll Free: 1-866-964-2589, Fax: 1-888-225-1868, info@antageneinc.com,
www.antageneinc.com