



Merlin (Phospho-Ser518) Antibody

Cat. #: ANTY011266

Species: Human, Mouse and Rat

Quantity: 100ug

Concentration: 100ug/100ul

Storage:

Store at -20°C/1 year

Immunogen:

The antiserum was produced against synthesized phosphopeptide derived from human Merlin around the phosphorylation site of serine 518 (R-L-SP-M-E).

Specificity:

Merlin (phospho-Ser518) antibody detects endogenous levels of Merlin only when phosphorylated at serine 518.

Tested application: WB

Application Notes: Rabbit IgG in phosphate buffered saline (without Mg²⁺ and Ca²⁺), pH 7.4, 150mM NaCl, 0.02% sodium azide and 50% glycerol.

Raised In: Rabbit

Purity:

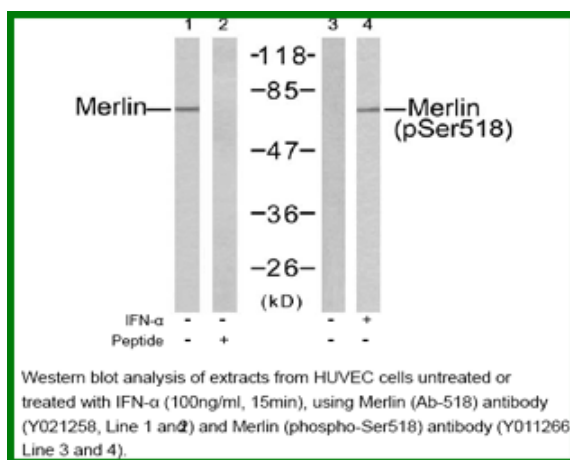
The antibody was affinity-purified from rabbit antiserum by affinity-chromatography using epitope-specific phosphopeptide. The antibody against non-phosphopeptide was removed by chromatography using non-phosphopeptide corresponding to the phosphorylation site.

Storage buffer: WB: 1:500~1:1000

Form: Liquid

References

Guang-Hui Xiao, et.al. (2005) Mol. Cell. Biol ; 25: 2384 - 2394. Hi-Su Yang, et.al. (2006) Cancer Res ; 66: 2708 - 2715. R Bohni, et.al. (1994) J. Biol. Chem ; 269: 14541 - 14545. Adam J. Ratner, et.al. (2001) J. Biol. Chem ; 276: 19267 - 19275.



For research use only

Antagene, Inc. Toll Free: 1-866-964-2589, Fax: 1-888-225-1868, info@antageneinc.com,
www.antageneinc.com