



## EGFR (phospho-Tyr1110) Antibody

**Cat. #:** ANTY011264

**Species:** Human, Mouse, Rat

**Quantity:** 100ug

**Concentration:** 100ug/100ul

**Storage and Stability:** Store at -20°C/1 year

**Immunogen:** The antiserum was produced against synthesized phosphopeptide derived from human EGFR around the phosphorylation site of tyrosine 1110 (P-V-YP-H-N).

**Specificity:** EGFR (phospho-Tyr1110) antibody detects endogenous levels of EGFR only when phosphorylated at tyrosine 1110.

**Tested Application:** Western Blot

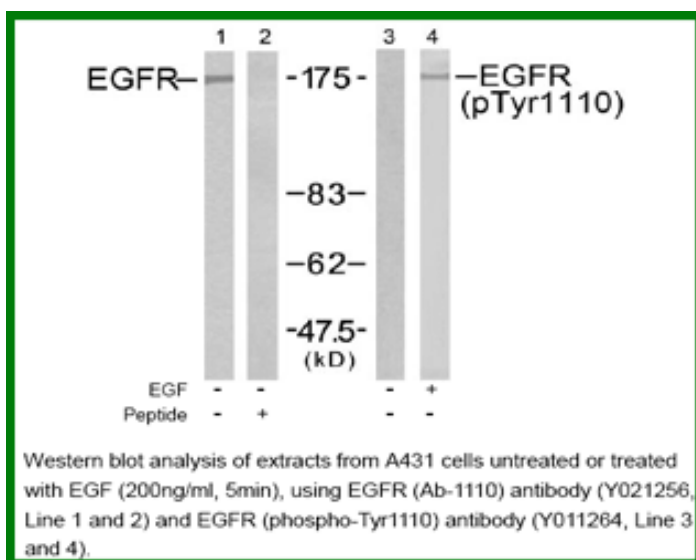
**Application Notes :** Rabbit IgG in phosphate buffered saline (without Mg<sup>2+</sup> and Ca<sup>2+</sup>), pH 7.4, 150mM NaCl, 0.02% sodium azide and 50% glycerol.

**Raised In:** Rabbit

**Purity:** The antibody was affinity-purified from rabbit antiserum by affinity-chromatography using epitope-specific phosphopeptide. The antibody against non-phosphopeptide was removed by chromatography using non-phosphopeptide corresponding to the phosphorylation site.

**Storage Buffer:** WB: 1:500~1:1000

**Reference:** Kaisa Erjala, et.al. (2006) Clin. Cancer Res Jul 2006; 12: 4103 - 4111. Judit Anido, et.al. (2003) Clin. Cancer Res ; 9: 1274. Julian Andreev, et.al. (2001) J. Biol. Chem ; 276: 20130 - 20135. Suil Kim, et.al. (2002) Am J Physiol Lung Cell Mol Physiol ; 283: 67.



**For research use only**

Antagene, Inc. Toll Free: 1-866-964-2589, Fax: 1-888-225-1868, [info@antageneinc.com](mailto:info@antageneinc.com),  
[www.antageneinc.com](http://www.antageneinc.com)