



Connexin 43 (phospho-Ser367) Antibody

Cat. #: ANTY011258

Species: Human, Mouse and Rat

Quantity: 100ug

Concentration: 100ug/100ul

Storage and Stability: Store at -20°C/1 year

Immunogen: The antiserum was produced against synthesized phosphopeptide derived from human Connexin43 around the phosphorylation site of serine 367 (R-A-SP-S-R).

Specificity: Connexin43 (phospho-Ser367) antibody detects endogenous levels of Connexin43 only when phosphorylated at serine 367.

Tested Application: WB and IHC

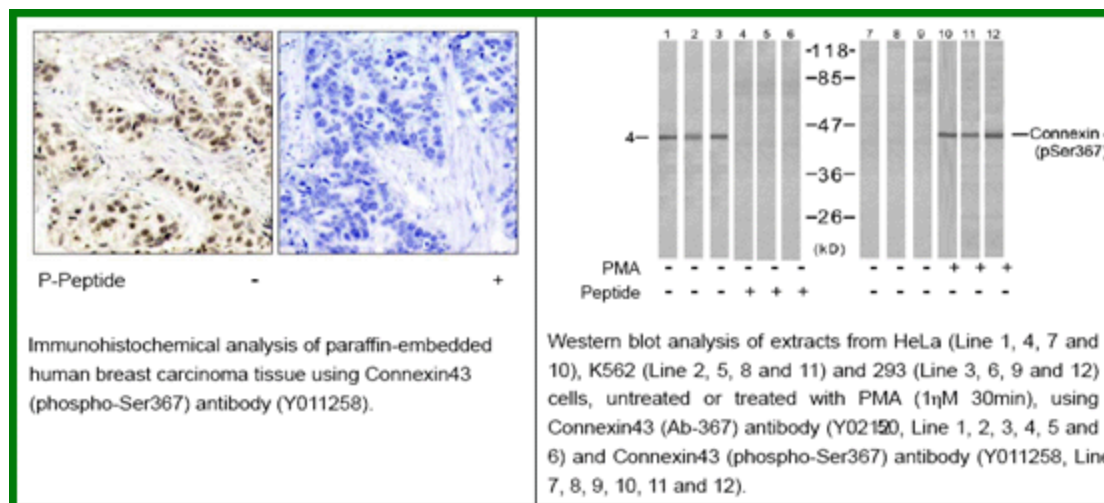
Application Notes : Rabbit IgG in phosphate buffered saline (without Mg²⁺ and Ca²⁺), pH 7.4, 150mM NaCl, 0.02% sodium azide and 50% glycerol.

Raised In: Rabbit

Purity: The antibody was affinity-purified from rabbit antiserum by affinity-chromatography using epitope-specific phosphopeptide. The antibody against non-phosphopeptide was removed by chromatography using non-phosphopeptide corresponding to the phosphorylation site.

Storage Buffer: WB: 1:500~1:1000 IHC: 1:50-1:100

Reference: Joell L. Solan¹, et al. (2003) Cell Science 116: 2203-2211 Satoshi Matsushita, et al. (2006) Histochemistry and Cytochemistry 54 (3): 343-353, Xiaoyong Bao, et al. (2004) Cell Physiol 286: C647-C654 W. E. I. Li, et al.(1998) European Journal of Neuroscience 10: 2444



For research use only

Antagene, Inc. Toll Free: 1-866-964-2589, Fax: 1-888-225-1868, info@antageneinc.com,
www.antageneinc.com