



RelB (Phospho-Ser552) Antibody

Cat. #: ANTY011255

Species: Human, Mouse, Rat

Quantity: 100ug

Concentration: 100ug/100ul

Storage and Stability: Store at -20°C/1 year

Immunogen: The antiserum was produced against synthesized phosphopeptide derived from human RelB around the phosphorylation site of serine 552 (L-L-SP-P-G).

Specificity: RelB (phospho-Ser552) antibody detects endogenous levels of RelB only when phosphorylated at serine552.

Tested Application: WB and IHC

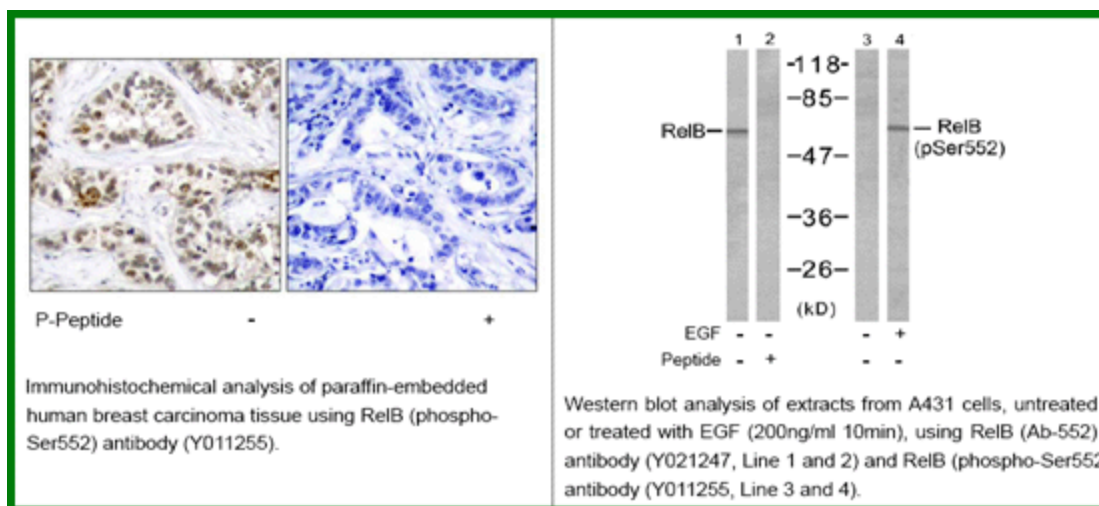
Application Notes : Rabbit IgG in phosphate buffered saline (without Mg²⁺ and Ca²⁺), pH 7.4, 150mM NaCl, 0.02% sodium azide and 50% glycerol.

Raised In: Rabbit

Purity: The antibody was affinity-purified from rabbit antiserum by affinity-chromatography using epitope-specific phosphopeptide. The antibody against non-phosphopeptide was removed by chromatography using non-phosphopeptide corresponding to the phosphorylation site.

Storage Buffer: WB: 1:500~1:1000 IHC: 1:50-1:100

Reference: Marienfeld R, et al. (2001) Oncogene. 20 (56): 8142-7. Charlotte S. Kaetzel1, et al. (2005) Immunological Reviews Volume 206: 83 Elwira Pyz, et al. (2006) J Immunol. 176:7447-55



For research use only

Antagene, Inc. Toll Free: 1-866-964-2589, Fax: 1-888-225-1868, info@antageneinc.com,
www.antageneinc.com