



## p70 S6 Kinase (Phospho-Thr421) Antibody

**Cat. #:** ANTY011254

**Species:** Human, Mouse, Rat

**Quantity:** 100ug

**Concentration:** 100ug/100ul

**Storage and Stability:** Store at -20°C/1 year

**Immunogen:** The antiserum was produced against synthesized phosphopeptide derived from human p70 S6 Kinase around the phosphorylation site of threonine 421 (P-R-TP-P-V).

**Specificity:** p70 S6 Kinase (phospho-Ser421) antibody detects endogenous levels of p70 S6 Kinase only when phosphorylated at threonine 421.

**Tested Application:** WB, IHC

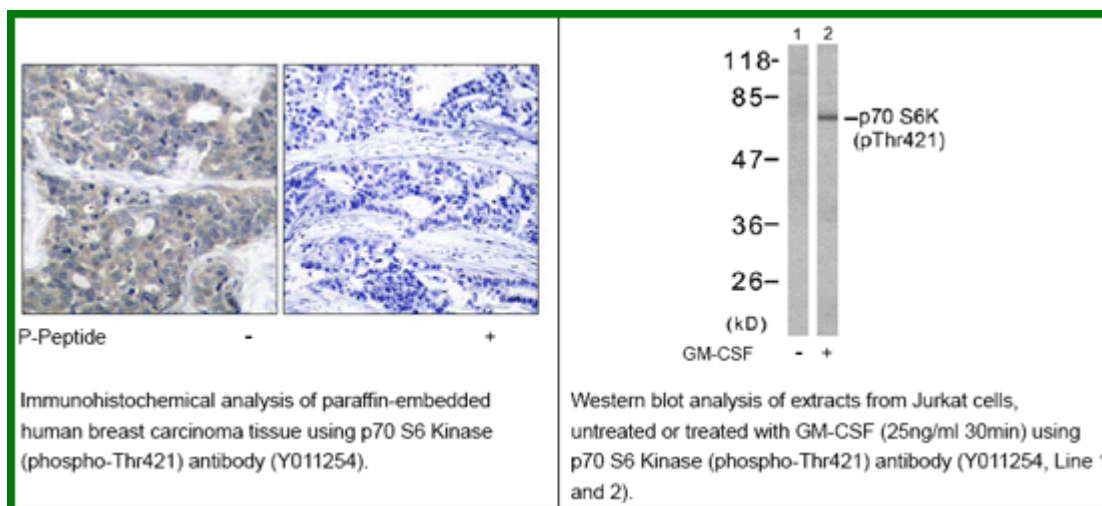
**Application Notes :** Rabbit IgG in phosphate buffered saline (without Mg<sup>2+</sup> and Ca<sup>2+</sup>), pH 7.4, 150mM NaCl, 0.02% sodium azide and 50% glycerol.

**Raised In:** Rabbit

**Purity:** The antibody was affinity-purified from rabbit antiserum by affinity-chromatography using epitope-specific phosphopeptide. The antibody against non-phosphopeptide was removed by chromatography using non-phosphopeptide corresponding to the phosphorylation site.

**Storage Buffer:** WB: 1:500~1:1000 IHC: 1:50-1:100

**Reference:** Xiao-Feng, et al. (2003) Le1 30 Volume 22: 484-497 An WL, et al. (2003) Am J Pathol. 163(2): 591-607. Le XF, et al. (2003) Oncogene.22(4): 484-97



**For research use only**

Antagene, Inc. Toll Free: 1-866-964-2589, Fax: 1-888-225-1868, [info@antageneinc.com](mailto:info@antageneinc.com),  
[www.antageneinc.com](http://www.antageneinc.com)