



## p38 MAPK (Phospho-Tyr182) Antibody

**Cat. #:** ANTY011253

**Species:** Human, Mouse, Rat

**Quantity:** 100ug

**Concentration:** 100ug/100ul

**Storage and Stability:** Store at -20°C/1 year

**Immunogen:** The antiserum was produced against synthesized phosphopeptide derived from human p38 MAPK around the phosphorylation site of tyrosine 182 (T-G-YP-V-A).

**Specificity:** p38 MAPK (phospho-Tyr182) antibody detects endogenous levels of P38MAPK only when phosphorylated at tyrosine 182.

**Tested Application:** WB and IHC

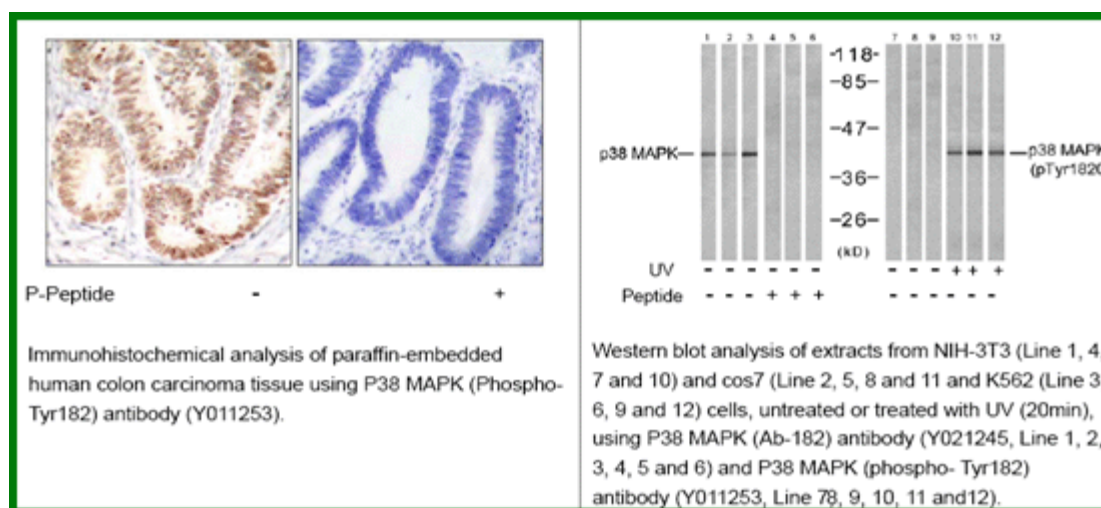
**Application Notes :** Rabbit IgG in phosphate buffered saline (without Mg<sup>2+</sup> and Ca<sup>2+</sup>), pH 7.4, 150mM NaCl, 0.02% sodium azide and 50% glycerol.

**Raised In:** Rabbit

**Purity:** The antibody was affinity-purified from rabbit antiserum by affinity-chromatography using epitope-specific phosphopeptide. The antibody against non-phosphopeptide was removed by chromatography using non-phosphopeptide corresponding to the phosphorylation site.

**Storage Buffer:** WB: 1:500~1:1000 IHC: 1:50-1:100

**Reference:** Ming Zheng, et al.(2005) The FASEB Journal. 19: 109-111 Bernt van den et al.(2001) Blink Immunology, 166: 582-587 Arshad Rahman, et al. (2004) Am J Physiol Lung Cell Mol Physiol 287: L1017-L1024 Osamu Yoshino, et al. (2003) Endocrinology & Metabolism Vol. 88: 2236-2241



**For research use only**

Antagene, Inc. Toll Free: 1-866-964-2589, Fax: 1-888-225-1868, [info@antageneinc.com](mailto:info@antageneinc.com),  
[www.antageneinc.com](http://www.antageneinc.com)