



p38 MAPK (Phospho-Thr180) Antibody

Cat. #: ANTY011252

Species: Human, Mouse, Rat

Quantity: 100ug

Concentration: 100ug/100ul

Storage and Stability: Store at -20°C/1 year

Immunogen: The antiserum was produced against synthesized phosphopeptide derived from human p38 MAPK around the phosphorylation site of threonine 180 (E-M-TP-G-Y).

Specificity: p38 MAPK (phospho-Thr180) antibody detects endogenous levels of p38 MAPK only when phosphorylated at threonine 180.

Tested Application: IHC

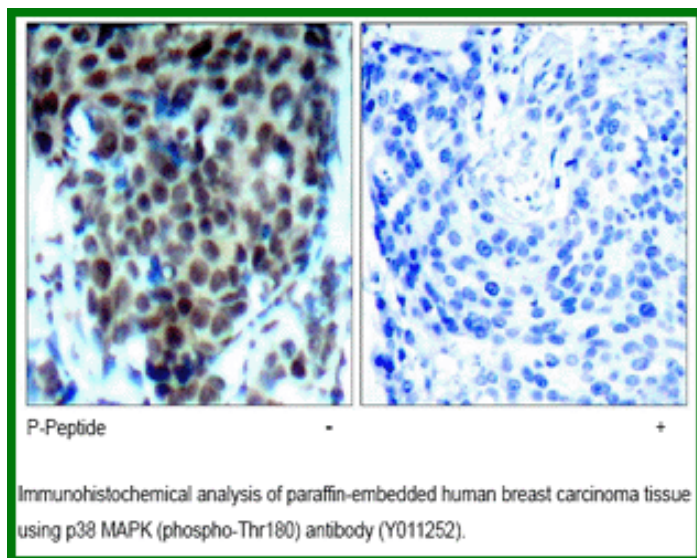
Application Notes : Rabbit IgG in phosphate buffered saline (without Mg²⁺ and Ca²⁺), pH 7.4, 150mM NaCl, 0.02% sodium azide and 50% glycerol.

Raised In: Rabbit

Purity: The antibody was affinity-purified from rabbit antiserum by affinity-chromatography using epitope-specific phosphopeptide. The antibody against non-phosphopeptide was removed by chromatography using non-phosphopeptide corresponding to the phosphorylation site.

Storage Buffer: IHC: 1:50~1:100

Reference: Kim JE, et al. (2005) J Proteome Res Jul-Aug; 4(4): 1339-1346 Meng F, et al. (2005) Am J Physiol Cell Physiol May 25 Jin ZH, et al. (2005) Oncogene Mar 17; 24(12): 1973-1981



For research use only

Antagene, Inc. Toll Free: 1-866-964-2589, Fax: 1-888-225-1868, info@antageneinc.com,
www.antageneinc.com