



## NF- $\kappa$ B p105/p50 (Phospho-Ser932) Antibody

**Cat. #:** ANTY011251

**Species:** Human, Mouse, Rat

**Quantity:** 100ug

**Concentration:** 100ug/100ul

**Storage and Stability:** Store at -20°C/1 year

**Immunogen:** The antiserum was produced against synthesized phosphopeptide derived from human NF $\kappa$ B-p105/p50 around the phosphorylation site of serine 932 (E-T-SP-F-R).

**Specificity:** NF $\kappa$ B-p105/p50 (phospho-Ser932) antibody detects endogenous levels of NF $\kappa$ B-p105/p50 only when phosphorylated at serine 932.

**Tested Application:** WB

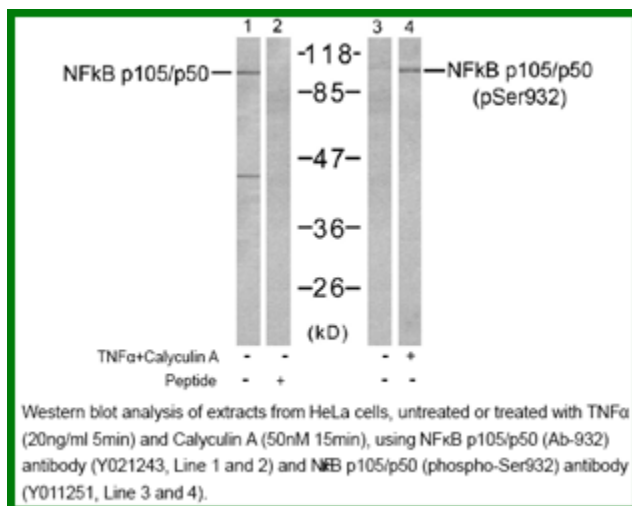
**Application Notes :** Rabbit IgG in phosphate buffered saline (without Mg<sup>2+</sup> and Ca<sup>2+</sup>), pH 7.4, 150mM NaCl, 0.02% sodium azide and 50% glycerol.

**Raised In:** Rabbit

**Purity:** The antibody was affinity-purified from rabbit antiserum by affinity-chromatography using epitope-specific phosphopeptide. The antibody against non-phosphopeptide was removed by chromatography using non-phosphopeptide corresponding to the phosphorylation site.

**Storage Buffer:** WB: 1:500~1:1000

**Reference:** Sören Beinke et al. (2004) Biochem J. 382(Pt 2): 393–409. Vigo Heissmeyer<sup>1</sup>, et al. (1999) The EMBO Journal 18: 4766–4778, F Chen, et al. (2006) Cell Death and Differentiation 13: 1835–1838. Kris A. Steinbrecher, et al. (2005) Mol Cell Biol. 25(19): 8444–8455.



**For research use only**

Antagene, Inc. Toll Free: 1-866-964-2589, Fax: 1-888-225-1868, [info@antageneinc.com](mailto:info@antageneinc.com),  
[www.antageneinc.com](http://www.antageneinc.com)