



p44/42 MAP Kinase (Phospho-Tyr204) Antibody

Cat. #: ANTY011246

Species: Human, Mouse, Rat

Quantity: 100ug

Concentration: 100ug/100ul

Storage and Stability: Store at -20°C/1 year

Immunogen: The antiserum was produced against synthesized phosphopeptide derived from human p44/42 MAP Kinase around the phosphorylation site of tyrosine 204 (T-E-YP-V-A).

Specificity: p44/42 MAP Kinase (phospho-Tyr204) antibody detects endogenous levels of p44/42 MAP Kinase only when phosphorylated at tyrosine 204.

Tested Application: WB

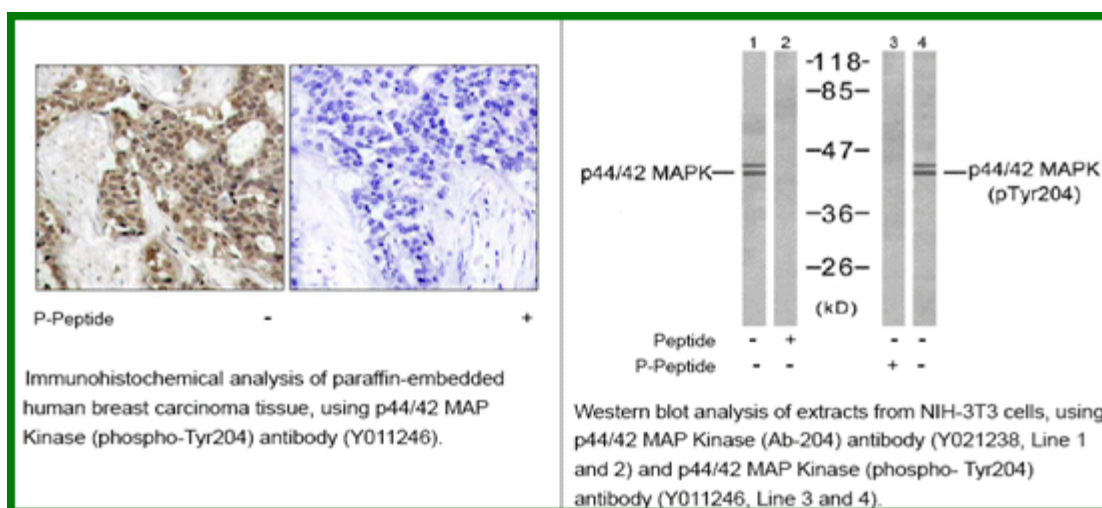
Application Notes : Rabbit IgG in phosphate buffered saline (without Mg²⁺ and Ca²⁺), pH 7.4, 150mM NaCl, 0.02% sodium azide and 50% glycerol.

Raised In: Rabbit

Purity: The antibody was affinity-purified from rabbit antiserum by affinity-chromatography using epitope-specific phosphopeptide. The antibody against non-phosphopeptide was removed by chromatography using non-phosphopeptide corresponding to the phosphorylation site.

Storage Buffer: WB: 1:500~1:1000

Reference: TETE HANNKEN, et al. (2000) Am Soc Nephrol 11:1387-1397 Omar D. PerezNature et al. (2002) Biotechnology 20: 155 - 162 Jingui Yu, et al. (2005) Anesth Analg 101: 315-321 Hironobu Ihn et al.(2000) Immunology 165: 2149-2155



For research use only

Antagene, Inc. Toll Free: 1-866-964-2589, Fax: 1-888-225-1868, info@antageneinc.com,
www.antageneinc.com