



CDC2 (Phospho-Tyr15) Antibody

Cat. #: ANTY011244

Species: Human, Mouse, Rat

Quantity: 100ug

Concentration: 100ug/100ul

Storage and Stability: Store at -20°C/1 year

Immunogen: The antiserum was produced against synthesized phosphopeptide derived from human CDC2 around the phosphorylation site of tyrosine 15 (G-T-YP-G-V).

Specificity: CDC2 (phospho-Tyr15) antibody detects endogenous levels of CDC2 only when phosphorylated at tyrosine 15.

Tested Application: WB

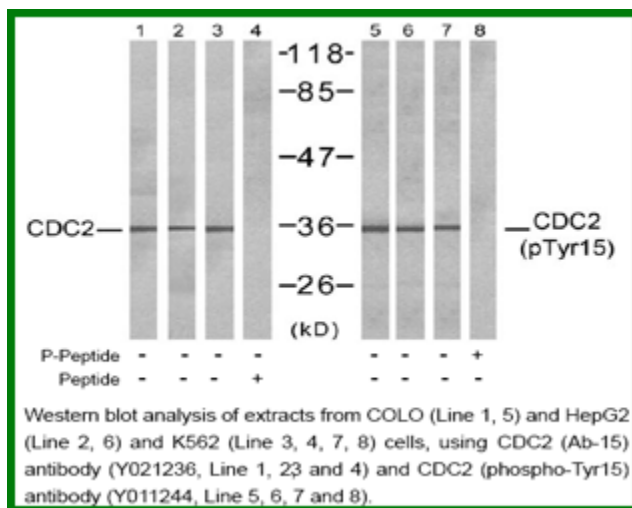
Application Notes : Rabbit IgG in phosphate buffered saline (without Mg²⁺ and Ca²⁺), pH 7.4, 150mM NaCl, 0.02% sodium azide and 50% glycerol.

Raised In: Rabbit

Purity: The antibody was affinity-purified from rabbit antiserum by affinity-chromatography using epitope-specific phosphopeptide. The antibody against non-phosphopeptide was removed by chromatography using non-phosphopeptide corresponding to the phosphorylation site.

Storage Buffer: WB: 1:500~1:1000

Reference: Y Gu, et al. (1992) EMBO J. 11(11): 3995-4005. P Jin, et al. (1996) Cell Biology, Vol 134: 963-970, Tyagi, et al. (2005) Alpa1Carcinogenesis, Volume 26: 1978-1987(10) Xiang S. et al. (1997) The EMBO Journal 16: 182-192



For research use only

Antagene, Inc. Toll Free: 1-866-964-2589, Fax: 1-888-225-1868, info@antageneinc.com,
www.antageneinc.com