



## Met (Phospho-Tyr1349) Antibody

**Cat. #:** ANTY011238

**Species:** Human, Mouse, Rat

**Quantity:** 100ug

**Concentration:** 100ug/100ul

**Storage and Stability:** Store at -20°C/1 year

**Immunogen:** The antiserum was produced against synthesized phosphopeptide derived from human Met around the phosphorylation site of tyrosine 1349 (E-H-YP-V-H).

**Specificity:** Met (phospho-Tyr1349) antibody detects endogenous levels of Met only when phosphorylated at tyrosine 1349.

**Tested Application:** Western Blot

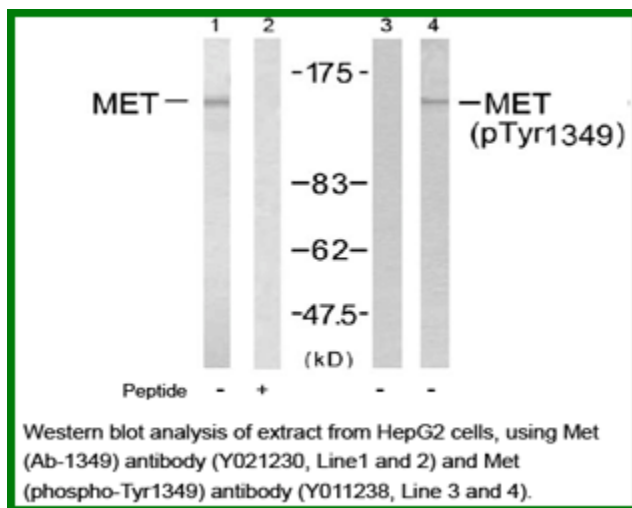
**Application Notes :** Rabbit IgG in phosphate buffered saline (without Mg<sup>2+</sup> and Ca<sup>2+</sup>), pH 7.4, 150mM NaCl, 0.02% sodium azide and 50% glycerol.

**Raised In:** Rabbit

**Purity:** The antibody was affinity-purified from rabbit antiserum by affinity-chromatography using epitope-specific phosphopeptide. The antibody against non-phosphopeptide was removed by chromatography using non-phosphopeptide corresponding to the phosphorylation site.

**Storage Buffer:** WB: 1:500~1:1000

**Reference:** Fan S, et al. (2001) Mol Cell Biol; 21(15): 4968-4984 Schiering N, et al. (2003) Proc Natl Acad Sci U S A; 100(22): 12654-12659 Plopper GE, et al. (1995) Mol Biol Cell; 6(10): 1349-1365 Ponzetto C, et al. (1993) Mol Cell Biol; 13(8): 4600-4608



**For research use only**

Antagene, Inc. Toll Free: 1-866-964-2589, Fax: 1-888-225-1868, [info@antageneinc.com](mailto:info@antageneinc.com),  
[www.antageneinc.com](http://www.antageneinc.com)