



### **Stathmin 1 (Phospho-Ser15) Antibody**

**Cat. #:** ANTY011234

**Species:** Human, Mouse, Rat

**Quantity:** 100ug

**Concentration:** 100ug/100ul

**Storage and Stability:** Store at -20°C/1 year

**Immunogen:** The antiserum was produced against synthesized phosphopeptide derived from human Stathmin 1 around the phosphorylation site of serine 15 (R-A-SP-G-Q).

**Specificity:** Stathmin 1 (phospho-Ser15) antibody detects endogenous levels of Stathmin 1 only when phosphorylated at serine 15.

**Tested Application:** IHC

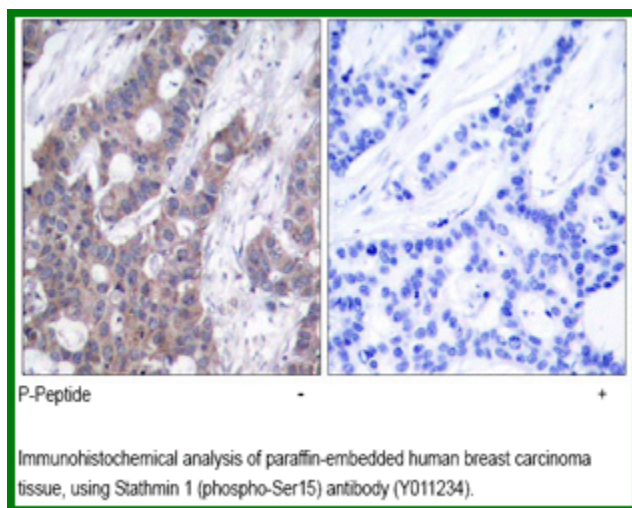
**Application Notes :** Rabbit IgG in phosphate buffered saline (without Mg<sup>2+</sup> and Ca<sup>2+</sup>), pH 7.4, 150mM NaCl, 0.02% sodium azide and 50% glycerol.

**Raised In:** Rabbit

**Purity:** The antibody was affinity-purified from rabbit antiserum by affinity-chromatography using epitope-specific phosphopeptide. The antibody against non-phosphopeptide was removed by chromatography using non-phosphopeptide corresponding to the phosphorylation site.

**Storage Buffer:** IHC: 1:50~1:100

**Reference:** Larsson N, et al. (1999) Mol Cell Biol; 19(3): 2242-2250 Küntziger T, et al. (2001) Mol Biol Cell; 12(2): 437-448 Vadlamudi RK, et al. (2005) Mol Cell Biol; 25(9): 3726-3736 Vázquez-Boland JA, et al. (2001) Clin Microbiol Rev; 14(3): 584-640 Howell B, et al. (1999) Mol Biol Cell; 10(1): 105-118



**For research use only**

Antagene, Inc. Toll Free: 1-866-964-2589, Fax: 1-888-225-1868, [info@antageneinc.com](mailto:info@antageneinc.com),  
[www.antageneinc.com](http://www.antageneinc.com)