



elF4E (Phospho-Ser209) Antibody

Cat. #: ANTY011233

Species: Human, Mouse, Rat

Quantity: 100ug

Concentration: 100ug/100ul

Storage and Stability: Store at -20°C/1 year

Immunogen: The antiserum was produced against synthesized phosphopeptide derived from human elF4E around the phosphorylation site of serine 209 (S-G-SP-T-T).

Specificity: elF4E (phospho-Ser209) antibody detects endogenous levels of elF4E only when phosphorylated at serine 209.

Tested Application: WB, IHC

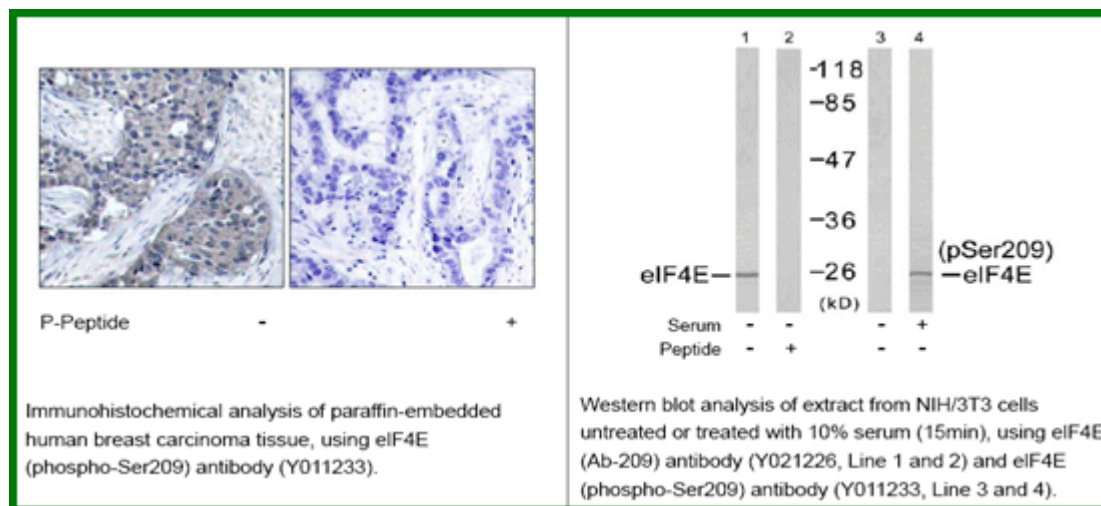
Application Notes : Rabbit IgG in phosphate buffered saline (without Mg²⁺ and Ca²⁺), pH 7.4, 150mM NaCl, 0.02% sodium azide and 50% glycerol.

Raised In: Rabbit

Purity: The antibody was affinity-purified from rabbit antiserum by affinity-chromatography using epitope-specific phosphopeptide. The antibody against non-phosphopeptide was removed by chromatography using non-phosphopeptide corresponding to the phosphorylation site.

Storage Buffer: WB: 1:500~1:1000 IHC: 1:50~1:100

Reference: Li BD, et al. (1998) Ann Surg; 227(5): 756-763 Altmann M, et al. (1989) Nucleic Acids Res; 17(18): 7520 De Gregorio E, et al. (2001) RNA; 7(1): 106-113 Gu W, et al. (2004) Nucleic Acids Res; 32(15): 4448-4461



For research use only

Antagene, Inc. Toll Free: 1-866-964-2589, Fax: 1-888-225-1868, info@antageneinc.com,
www.antageneinc.com