



S6 Ribosomal Protein (Phospho-Ser235) Antibody

Cat. #: ANTY011232

Species: Human, Mouse, Rat

Quantity: 100ug

Concentration: 100ug/100ul

Storage and Stability: Store at -20°C/1 year

Immunogen: The antiserum was produced against synthesized phosphopeptide derived from human S6 Ribosomal protein around the phosphorylation site of serine 235 (R-L-SP-S-L).

Specificity: S6 Ribosomal protein (phospho-Ser235) antibody detects endogenous levels of S6 Ribosomal protein only when phosphorylated at serine 235.

Tested Application: WB

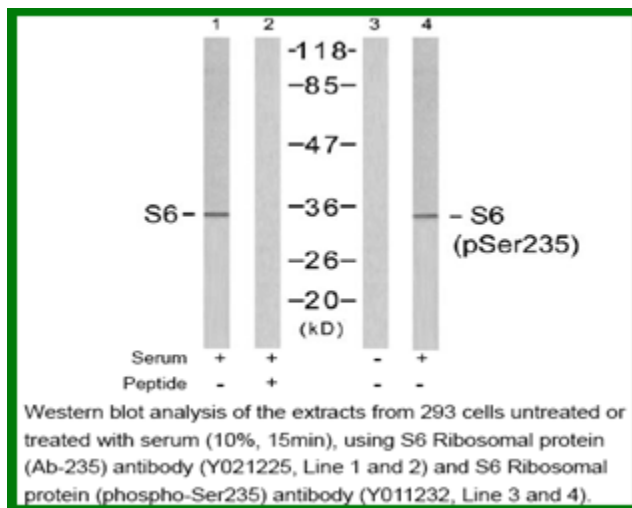
Application Notes : Rabbit IgG in phosphate buffered saline (without Mg²⁺ and Ca²⁺), pH 7.4, 150mM NaCl, 0.02% sodium azide and 50% glycerol.

Raised In: Rabbit

Purity: The antibody was affinity-purified from rabbit antiserum by affinity-chromatography using epitope-specific phosphopeptide. The antibody against non-phosphopeptide was removed by chromatography using non-phosphopeptide corresponding to the phosphorylation site.

Storage Buffer: WB: 1:500~1:1000

Reference: McBride K, et al. (1998) Mol Cell Biol 18(9): 5073-5081. Williams AJ, et al. (2003) Plant Physiol 132(4): 2086-2097. Wilson MA, et al. (1997) Biochem J 325(Pt 1): 217-222. Arnesen T, et al. (2005) Biochem J 386(Pt 3): 433-443.



For research use only

Antagene, Inc. Toll Free: 1-866-964-2589, Fax: 1-888-225-1868, info@antageneinc.com,
www.antageneinc.com