



IRS-1 (Phospho-Ser639) Antibody

Cat. #: ANTY011231

Species: Human, Mouse and Rat

Quantity: 100ug

Concentration: 100ug/100ul

Storage and Stability:

Store at -20°C/1 year

Immunogen:

The antiserum was produced against synthesized phosphopeptide derived from human IRS-1 around the phosphorylation site of serine 639 (P-K-SP-V-S).

Specificity:

IRS-1 (phospho-Ser639) antibody detects endogenous levels of IRS-1 only when phosphorylated at serine 639.

Tested application: IHC

Application Notes: Rabbit IgG in phosphate buffered saline (without Mg²⁺ and Ca²⁺), pH 7.4, 150mM NaCl, 0.02% sodium azide and 50% glycerol.

Raised In: Rabbit

Purity:

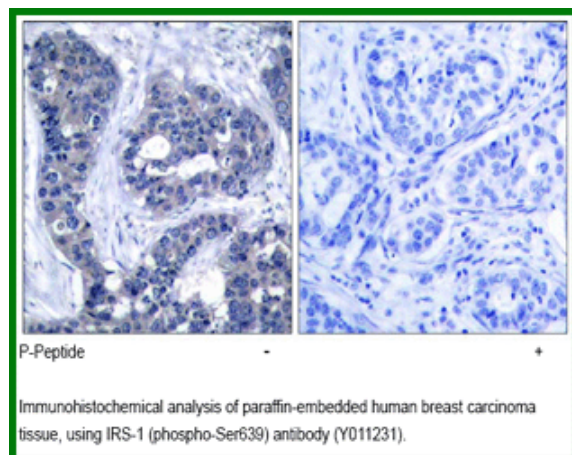
The antibody was affinity-purified from rabbit antiserum by affinity-chromatography using epitope-specific phosphopeptide. The antibody against non-phosphopeptide was removed by chromatography using non-phosphopeptide corresponding to the phosphorylation site.

Storage buffer: IHC: 1:50~1:100

Form: Liquid

References

Ozes ON, et al. (2001) Proc Natl Acad Sci U S A; 98(8): 4640-4645 Tzatsos A, et al. (2006) Mol Cell Biol; 26(1): 63-76 Steppan CM, et al. (2005) Mol Cell Biol; 25(4): 1569-1575 Batty IH, et al. (2004) Biochem J; 379(Pt 3): 641-651



For research use only

Antagene, Inc. Toll Free: 1-866-964-2589, Fax: 1-888-225-1868, info@antageneinc.com,
www.antageneinc.com