



## EGFR (Phospho-Tyr869) Antibody

**Cat. #:** ANTY011229

**Species:** Human, Mouse and Rat

**Quantity:** 100ug

**Concentration:** 100ug/100ul

**Storage and Stability:**

Store at -20°C/1 year

**Immunogen:**

The antiserum was produced against synthesized phosphopeptide derived from human EGFR around the phosphorylation site of tyrosine 869 (K-E-YP-H-A).

**Specificity:**

EGFR (phospho-Tyr869) antibody detects endogenous levels of EGFR only when phosphorylated at tyrosine 869.

**Tested application:** Western Blot

**Application Notes:** Rabbit IgG in phosphate buffered saline (without Mg<sup>2+</sup> and Ca<sup>2+</sup>), pH 7.4, 150mM NaCl, 0.02% sodium azide and 50% glycerol.

**Raised In:** Rabbit

**Purity:**

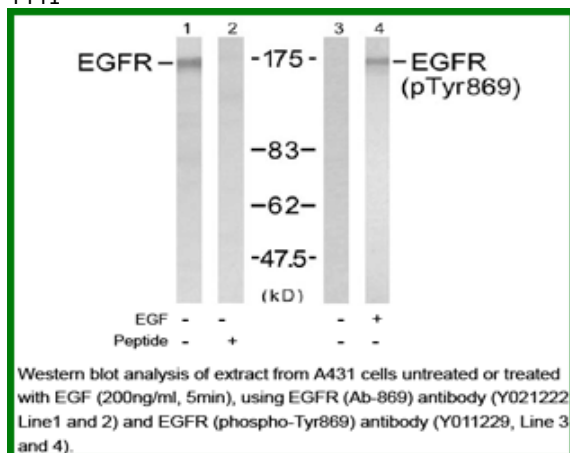
The antibody was affinity-purified from rabbit antiserum by affinity-chromatography using epitope-specific phosphopeptide. The antibody against non-phosphopeptide was removed by chromatography using non-phosphopeptide corresponding to the phosphorylation site.

**Storage buffer:** WB: 1:500~1:1000

**Form:** Liquid

**References**

Inoue A, et al. (2005) PLoS Med; 2(1): e13 Sun H, et al. (2004) EMBO J; 23(1): 100-110 Kanner SB, et al. (1991) Mol Cell Biol; 11(2): 713-720 Wu TT, et al. (1998) Mol Biol Cell; 9(7): 1661-1674 O'Rourke DM, et al. (1997) Proc Natl Acad Sci U S A; 94(7): 3250-3255 Goldstein DJ, et al. (1994) J Virol; 68(7): 4432-4441



**For research use only**

Antagene, Inc. Toll Free: 1-866-964-2589, Fax: 1-888-225-1868, [info@antageneinc.com](mailto:info@antageneinc.com),  
[www.antageneinc.com](http://www.antageneinc.com)