



EGFR (Phospho-Tyr1197) Antibody

Cat. #: ANTY011228

Species: Human, Mouse, Rat

Quantity: 100ug

Concentration: 100ug/100ul

Storage and Stability: Store at -20°C/1 year

Immunogen: The antiserum was produced against synthesized phosphopeptide derived from human EGFR around the phosphorylation site of tyrosine 1197 (A-E-YP-L-R).

Specificity: EGFR (phospho-Tyr1197) antibody detects endogenous levels of EGFR only when phosphorylated at tyrosine 1197

Tested Application: Western Blot and IHC

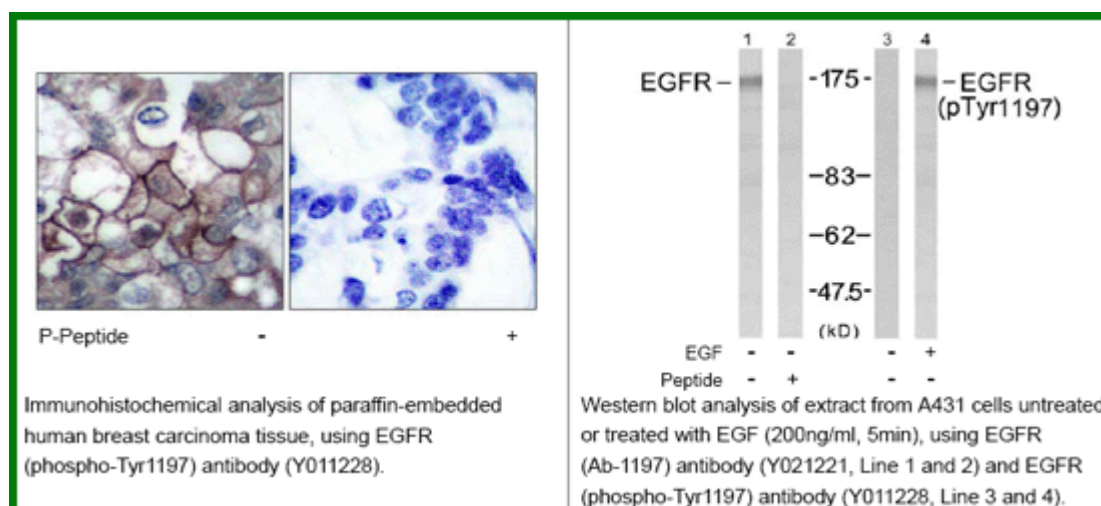
Application Notes : Rabbit IgG in phosphate buffered saline (without Mg²⁺ and Ca²⁺), pH 7.4, 150mM NaCl, 0.02% sodium azide and 50% glycerol.

Raised In: Rabbit

Purity: The antibody was affinity-purified from rabbit antiserum by affinity-chromatography using epitope-specific phosphopeptide. The antibody against non-phosphopeptide was removed by chromatography using non-phosphopeptide corresponding to the phosphorylation site.

Storage Buffer: WB: 1:500~1:1000 IHC: 1:50~1:100

Reference: Corbalan-Garcia S, et al. (1996) Mol Cell Biol; 16(10): 5674-5682 Kanner SB, et al. (1991) Mol Cell Biol; 11(2): 713-720 Wu TT, et al. (1998) Mol Biol Cell; 9(7): 1661-1674 O'Rourke DM, et al. (1997) Proc Natl Acad Sci U S A; 94(7): 3250-3255 Goldstein DJ, et al. (1994) J Virol; 68(7): 4432-4441



For research use only

Antagene, Inc. Toll Free: 1-866-964-2589, Fax: 1-888-225-1868, info@antageneinc.com,
www.antageneinc.com