



## Met (Phospho-Tyr1234) Antibody

**Cat. #:** ANTY011227

**Species:** Human, Mouse, Rat

**Quantity:** 100ug

**Concentration:** 100ug/100ul

**Storage and Stability:** Store at -20°C/1 year

**Immunogen:** The antiserum was produced against synthesized phosphopeptide derived from human Met around the phosphorylation site of tyrosine 1234 (K-E-YP-Y-S).

**Specificity:** Met (phospho-Tyr1234) antibody detects endogenous levels of Met only when phosphorylated at tyrosine 1234.

**Tested Application:** WB

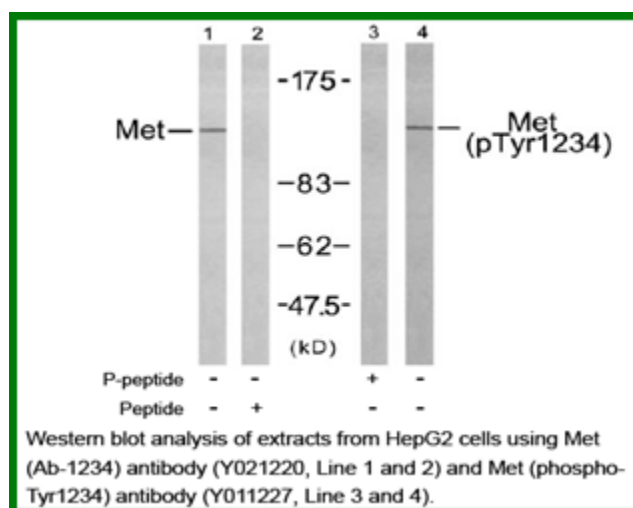
**Application Notes :** Rabbit IgG in phosphate buffered saline (without Mg<sup>2+</sup> and Ca<sup>2+</sup>), pH 7.4, 150mM NaCl, 0.02% sodium azide and 50% glycerol.

**Raised In:** Rabbit

**Purity :** The antibody was affinity-purified from rabbit antiserum by affinity-chromatography using epitope-specific phosphopeptide. The antibody against non-phosphopeptide was removed by chromatography using non-phosphopeptide corresponding to the phosphorylation site.

**Storage Buffer:** WB: 1:500~1:1000

**Reference:** Gherardi E. et al. (2003). Proc Natl Acad Sci U S A. 100(21): 12039-12044. Shiu SH. et al. (2001) Proc Natl Acad Sci U S A. 98(19): 10763-10768. Hughes AL. et al. (2001) Genome Res. 11(5): 771-780. Onuchic LF. et al. (2002) Am J Hum Genet. 70(5): 1305-1317.



**For research use only**

Antagene, Inc. Toll Free: 1-866-964-2589, Fax: 1-888-225-1868, [info@antageneinc.com](mailto:info@antageneinc.com),  
[www.antageneinc.com](http://www.antageneinc.com)