



Stathmin 1 (Phospho-Ser37) Antibody

Cat. #: ANTY011225

Species: Human, Mouse, Rat

Quantity: 100ug

Concentration: 100ug/100ul

Storage and Stability: Store at -20°C/1 year

Immunogen: The antiserum was produced against synthesized phosphopeptide derived from human Stathmin 1 around the phosphorylation site of serine 37 (P-L-SP-P-P).

Specificity: Stathmin 1 (phospho-Ser37) antibody detects endogenous levels of Stathmin 1 only when phosphorylated at serine 37.

Tested Application: WB and IHC

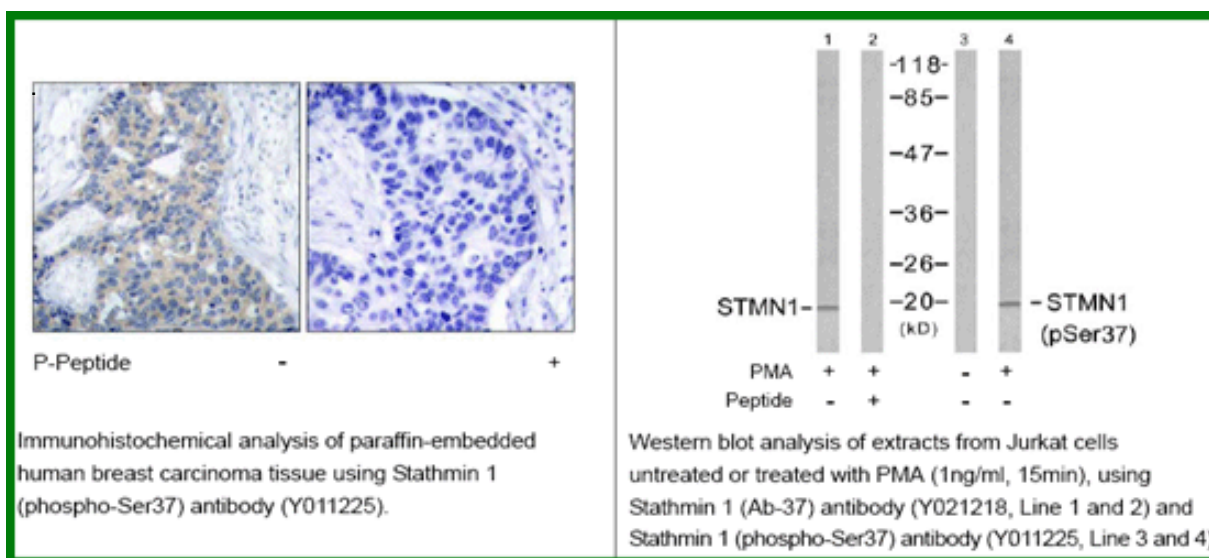
Application Notes : Rabbit IgG in phosphate buffered saline (without Mg²⁺ and Ca²⁺), pH 7.4, 150mM NaCl, 0.02% sodium azide and 50% glycerol.

Raised In: Rabbit

Purity: The antibody was affinity-purified from rabbit antiserum by affinity-chromatography using epitope-specific phosphopeptide. The antibody against non-phosphopeptide was removed by chromatography using non-phosphopeptide corresponding to the phosphorylation site.

Storage Buffer: WB: 1:500~1:1000 IHC: 1:50~1:100

Reference: Wang KK, et al. (1991) Biochem J 279(Pt 2): 537-544. Sekimoto T, et al. (2004) EMBO J 23(9): 1934-1942. Doye V, et al. (1992) Biochem J 287(Pt 2): 549-554. Larsson N, et al. (1999) Mol Cell Biol 19(3): 2242-2250.



For research use only

Antagene, Inc. Toll Free: 1-866-964-2589, Fax: 1-888-225-1868, info@antageneinc.com,
www.antageneinc.com